

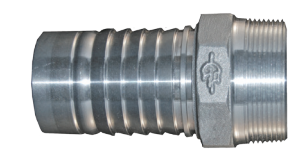


**TMC50 BODY**  
MALE NPT THREAD  
Made in the U.S.A.



| Size   | Stainless Steel |         | Plated Carbon Steel |         |
|--------|-----------------|---------|---------------------|---------|
|        | Part Name       | Item #  | Part Name           | Item #  |
| 3/4"   | 07TMC50SS       | 5710702 | 07TMC50CS           | 5700702 |
| 1"     | 10TMC50SS       | 5711002 | 10TMC50CS           | 5701002 |
| 1-1/4" | 12TMC50SS       | 5711202 | 12TMC50CS           | 5701202 |
| 1-1/2" | 15TMC50SS       | 5711502 | 15TMC50CS           | 5701502 |
| 2"     | 20TMC50SS       | 5712002 | 20TMC50CS           | 5702002 |
| 2-1/2" | 25TMC50SS       | 5712502 | 25TMC50CS           | 5702502 |
| 3"     | 30TMC50SS       | 5713002 | 30TMC50CS           | 5703002 |
| 4"     | 40TMC50SS       | 5714002 | 40TMC50CS           | 5704002 |
| 5"     | 50TMC50SS       | ☎       | 50TMC50CS           | 5705002 |
| 6"     | 60TMC50SS       | 5716002 | 60TMC50CS           | 5706002 |

**TMC50AL**  
MALE NPT THREAD  
Casting with Octagon  
Made in the U.S.A.



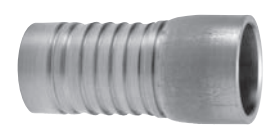
| Size   | Aluminum  |         |
|--------|-----------|---------|
|        | Part Name | Item #  |
| 3/4"   | 07TMC50AL | 5740702 |
| 1"     | 10TMC50AL | 5741002 |
| 1-1/2" | 15TMC50AL | 5741502 |
| 2"     | 20TMC50AL | 5742002 |
| 3"     | 30TMC50AL | 5743002 |
| 4"     | 40TMC50AL | 5744002 |

Custom design supplied upon request.

304 Stainless Steel is standard material, also available in 316 Stainless Steel by quote.

The Ferrules to be used with the bodies on this page are located on pages 105-113.

**WC50 BODY**  
BUTT-WELD PIPE  
SCHEDULE 40  
Made in the U.S.A.



| Size   | Aluminum  |         | Stainless Steel |         | Non-Plated Carbon Steel |         |
|--------|-----------|---------|-----------------|---------|-------------------------|---------|
|        | Part Name | Item #  | Part Name       | Item #  | Part Name               | Item #  |
| 1"     | 10WC50AL  | 5741014 | 10WC50SS        | 5711014 | 10WC50CS                | 5701014 |
| 1-1/2" | 15WC50AL  | 5741514 | 15WC50SS        | 5711514 | 15WC50CS                | 5701514 |
| 2"     | 20WC50AL  | 5742014 | 20WC50SS        | 5712014 | 20WC50CS                | 5702014 |
| 2-1/2" | 25WC50AL  | ☎       | 25WC50SS        | 5712514 | 25WC50CS                | 5702514 |
| 3"     | 30WC50AL  | 5743014 | 30WC50SS        | 5713014 | 30WC50CS                | 5703014 |
| 4"     | 40WC50AL  | 5744014 | 40WC50SS        | 5714014 | 40WC50CS                | 5704014 |

**VC50 BODY**  
GROOVED PIPE END  
Made in the U.S.A.



| Size   | Part Name | Stainless Steel |           | Plated Carbon Steel |  |
|--------|-----------|-----------------|-----------|---------------------|--|
|        |           | Item #          | Part Name | Item #              |  |
| 1"     | 10VC50SS  | 5711016         | 10VC50CS  | 5701016             |  |
| 1 1/4" | ☎         | ☎               | 12VC50CS  | 5701216             |  |
| 1-1/2" | 15VC50SS  | 5711516         | 15VC50CS  | ☎                   |  |
| 2"     | 20VC50SS  | 5712016         | 20VC50CS  | 5702016             |  |
| 2-1/2" | 25VC50SS  | 5712516         | 25VC50CS  | ☎                   |  |
| 3"     | 30VC50SS  | 5713016         | 30VC50CS  | 5703016             |  |
| 4"     | 40VC50SS  | 5714016         | 40VC50CS  | 5704016             |  |

| Size   | Part Name  | 316 Stainless Steel |            | Carbon Steel |  |
|--------|------------|---------------------|------------|--------------|--|
|        |            | Item #              | Part Name  | Item #       |  |
| 1"     | 10PFFC50SS | 5711015             | 10PFFC50CS | ☎            |  |
| 1-1/2" | 15PFFC50SS | 5711515             | 15PFFC50CS | ☎            |  |
| 2"     | 20PFFC50SS | 5712005             | 20PFFC50CS | 5702005      |  |
| 3"     | 30PFFC50SS | 5713005             | 30PFFC50CS | 5703005      |  |
| 4"     | 40PFFC50SS | 5714005             | 40PFFC50CS | 5704005      |  |

Pipe Flange bolt pattern conforms to ANSI B16.5 Class 150.

| Size   | Part Name | 316 Stainless Steel |           | Carbon Steel |  |
|--------|-----------|---------------------|-----------|--------------|--|
|        |           | Item #              | Part Name | Item #       |  |
| 1"     | 10PFC50SS | 5711019             | 10PFC50CS | ☎            |  |
| 1-1/2" | 15PFC50SS | 5711519             | 15PFC50CS | ☎            |  |
| 2"     | 20PFC50SS | 5712019             | 20PFC50CS | 5702001      |  |
| 3"     | 30PFC50SS | 5713019             | 30PFC50CS | 5703001      |  |
| 4"     | 40PFC50SS | 5714018             | 40PFC50CS | 5704001      |  |
| 6"     | 60PFC50SS | 64536000            | 60PFC50CS | 5704007      |  |

Pipe Flange bolt pattern conforms to ANSI B16.5 Class 150.

| Size | Part Name | 316 Stainless Steel |           | Carbon Steel |  |
|------|-----------|---------------------|-----------|--------------|--|
|      |           | Item #              | Part Name | Item #       |  |
| 2"   | 20TBC50SS | 50103               | 20TBC50CS | 50106        |  |
| 3"   | 30TBC50SS | 50104               | 30TBC50CS | 50107        |  |
| 4"   | 40TBC50SS | 50105               | 40TBC50CS | 50108        |  |

| Size | Part Name | 316 Stainless Steel |           | Aluminum |  |
|------|-----------|---------------------|-----------|----------|--|
|      |           | Item #              | Part Name | Item #   |  |
| 3"   | 30TTC50AL | 5744101             | 30TTC50SS | 5744004  |  |
| 4"   | 40TTC50AL | 5744102             | 40TTC50SS | 5744003  |  |

Tank Truck Flanges conform to (TTMA) Truck Trailer Manufacturers Assoc. standards.

All above flanges are available in 6", 8", 10", & 12" upon request.

**PFFC50 BODY**  
FLOATING ANSI PIPE  
FLANGE 150# X CRIMP  
HOSE SHANK.  
FLANGE AND BODY  
SPECIALLY DESIGNED  
TOGETHER TO ALLOW  
FLANGE TO SLIDE OVER  
CRIMPED SLEEVE OR  
FERRULE.

Made in the U.S.A.



**PFC50 BODY**  
FIXED ANSI PIPE  
FLANGE 150# X CRIMP  
HOSE SHANK.

Made in the U.S.A.



**TBC50 BODY**  
TURN BACK CRIMP  
HOSE SHANK FOR LAP  
JOINT FLANGE

Made in the U.S.A.



**TTFC50 BODY**  
FIXED TTMA FLANGE X CRIMP  
HOSE SHANK

Made in the U.S.A.



PROGRIP C50 External Crimp System

PROGRIP

C50 External Crimp System - Flanges