

### GSHD2

*Victaulic® Groove X HD2 Shank*

Made in the U.S.A.



| Size | Part Name | Item #     | Aluminum |
|------|-----------|------------|----------|
| 6"   | 60GSHD2   | 85640600H2 |          |
| 8"   | 80GSHD2   | 85640800H2 |          |
| 10"  | 100GSHD2  | 85641000H2 |          |
| 12"  | 120GSHD2  | 85641200H2 |          |

- 6" and 8" fittings are rated at 200 PSI
- 10" & 12" fittings are rated at 150 PSI

### PTHM

*PT Hose mender HD2 shank X HD2 shank*

Made in the U.S.A.



| Size | Part Name   | Item #    | Aluminum |
|------|-------------|-----------|----------|
| 6"   | PTHM600HD2  | 85660600H |          |
| 8"   | PTHM800HD2  | 856608001 |          |
| 10"  | PTHM1000HD2 | 856610001 |          |
| 12"  | PTHM1200HD2 | 856612001 |          |

- 6" and 8" fittings are rated at 200 PSI
- 10" & 12" fittings are rated at 150 PSI

### HD2

*HD2 Segmented Bolt Clamp*

Made in the U.S.A.



| Size | Part Name             | Item # | Aluminum |
|------|-----------------------|--------|----------|
| 6"   | 60HD2 Clamp Assembly  | 50561  |          |
| 8"   | 80HD2 Clamp Assembly  | 50510  |          |
| 10"  | 100HD2 Clamp Assembly | 50511  |          |
| 12"  | 120HD2 Clamp Assembly | 50524  |          |

- 6" Clamp has 3 sections
- 8" & 10" Clamps have 4 sections
- 12" Clamps have 5 sections

### CSHD2

*Crimp Sleeve*

Made in the U.S.A.



| Size | Part Name  | Item # | Aluminum |
|------|------------|--------|----------|
| 8"   | 80CSHD2AL  | 50525  |          |
| 10"  | 100CSHD2AL | 50530  |          |

### CHD2

*Heavy Duty*

Made in the U.S.A.



| Size | Part Name | Item #   | Aluminum |
|------|-----------|----------|----------|
| 6"   | 60CHD2    | 1000362H |          |

- Cam & Groove fittings are rated at 150 PSI

### EHD2

*Heavy Duty*

Made in the U.S.A.



| Size | Part Name | Item #   | Aluminum |
|------|-----------|----------|----------|
| 6"   | 60EHD2    | 1000562H |          |

- Cam & Groove fittings are rated at 150 PSI

### C US

*Undersized shank with Bands*

Made in the U.S.A.



| Size | Part Name        | Item #  | Aluminum |
|------|------------------|---------|----------|
| 4"   | 40CUS AL w/Bands | 1000341 |          |

- Cam & Groove fittings are rated at 150 PSI
- For use with Punch-Lok® center punch clamps

### E US

*Undersized shank with bands*

Made in the U.S.A.



| Size | Part Name        | Item #    | Aluminum |
|------|------------------|-----------|----------|
| 4"   | 40EUS AL w/Bands | 1000541HS |          |

- Cam & Groove fittings are rated at 150 PSI
- For use with Punch-Lok® center punch clamps

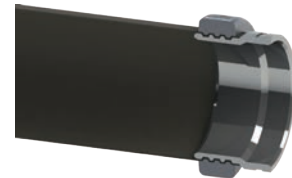
PT COUPLING COMPANY's new HD2 fluid transfer system offers a quick and economical way to use lay-flat hose in the transfer of fluid. These aluminum products utilized *Victaulic®* groove connections and HD2 hose shanks. The lay-flat hose is connected to the HD2 bodies by use of segmented bolt clamps or grooved crimp sleeves. HD2 System parts are available in 6 inch through 12 inch sizes.

PT USA has developed new fittings for 6", 8", 10" & 12" lay-flat hose to be used in the fracking industry for water delivery:

- Fittings are field serviceable
- Custom anodizing, powder coating, PT z-COR, and Electroless Nickel available.



GSHD2 Assembly with HD2 Clamp



Cross-Cut GSHD2 Assembly with HD2 Clamp



PTHM Assembly with HD2 Clamps

| Adapter X Flange |           | Aluminum  | Brass    | Stainless Steel |
|------------------|-----------|-----------|----------|-----------------|
| Size             | Part Name | Item #    | Item #   | Item #          |
| 2"               | TTF20A    | 60562000  | ☎        | ☎               |
| 2" x 3"          | TTF20X30A | 60562030  | ☎        | ☎               |
| 2" x 4"          | TTF20X40A | 60562040  | ☎        | ☎               |
| 2-1/2"           | TTF25A    | ☎         | 62562500 | ☎               |
| 3"               | TTF30A    | 60563000  | 62563000 | 64563000        |
| 3" x 4"          | TTF30X40A | 60563040  | 62563040 | 64563040*       |
| 4"               | TTF40A    | 60564000  | 62564000 | 64564000        |
| 4" X 6"          | TTF40X60A | 60564060* | ☎        | ☎               |
| 5"               | TTF50A    | ☎         | ☎        | 64565000        |
| 6"               | TTF60A    | 60566000  | 62566000 | 64566000        |
| 6" X 4"          | TTF60X40A | 60566040  | ☎        | ☎               |

\*Denotes parts are produced as welded fabrication.

| Adapter X Flange |           | Ductile Iron | Hard Coat Alum |
|------------------|-----------|--------------|----------------|
| Size             | Part Name | Item #       | Item #         |
| 2"               | TTF20A    | ☎            | ☎              |
| 2" x 3"          | TTF20X30A | ☎            | ☎              |
| 3"               | TTF30A    | 68563000     | 70563000       |
| 3" x 4"          | TTF30X40A | ☎            | ☎              |
| 4"               | TTF40A    | 68564000     | 70564000       |
| 6"               | TTF60A    | ☎            | 70566000       |

| Coupler X Flange |           | Aluminum HBS | Aluminum HB | Brass    | Stainless Steel |
|------------------|-----------|--------------|-------------|----------|-----------------|
| Size             | Part Name | Item #       | Item #      | Item #   | Item #          |
| 2"               | TTF20C    | 60582000     | ☎           | ☎        | ☎               |
| 2" X 3"          | TTF20X30C | 60582030*    | ☎           | ☎        | ☎               |
| 2-1/2"           | TTF25C    | ☎            | ☎           | 62582500 | 64582500        |
| 3"               | TTF30C    | 60583000     | 6058000074  | 62583000 | 64583000        |
| 3" x 4"          | TTF30X40C | 60583040     | 6058000075  | 62583040 | ☎               |
| 4"               | TTF40C    | 60584000     | 6058000076  | 62584000 | 64584000        |
| 4" x 3"          | TTF40X30C | 60584030*    | ☎           | ☎        | ☎               |
| 6"               | TTF60C    | ☎            | 60586000    | 62586000 | 64586000        |
| 6                | TTF60CHD  | ☎            | 6058600H    | ☎        |                 |
| 6" X 4"          | TTF60X40C | ☎            | 60586040    | ☎        | ☎               |
| 8"               | TTF80C    | ☎            | 60588000    | ☎        | ☎               |

|         |           | Ductile Iron | Hard Coat Alum |
|---------|-----------|--------------|----------------|
| Size    | Part Name | Item #       | Item #         |
| 2"      | TTF20C    | ☎            | ☎              |
| 3"      | TTF30C    | 68583000     | ☎              |
| 3" x 4" | TTF30X40C | ☎            | ☎              |
| 4"      | TTF40C    | 68584000     | 70584000       |
| 6"      | TTF60C    | 68586000     | ☎              |

### TTFA

*ADAPTER X TTMA FLANGE*

Made in the U.S.A.



Tank Truck Flanges conform to (TTMA) Truck Trailer Manufacturers Assoc. standards.

Adapter X TTMA Flange line drawings & dimensions are on page 169.

PSI chart on page 158.

### TTFC

*COUPLER X TTMA FLANGE*

Made in the U.S.A.



Also available with STA-LOK® II cam arms.

Please call for special quote on cam arm and components in 316 Stainless Steel.

Coupler X TTMA Flange line drawings & dimensions are on page 169.

PSI chart on page 158.