



# // HELIX

THERMOPLASTIC MULTISPIRAL HOSE  
FOR WATERBLASTING & HYDRAULIC  
APPLICATIONS

**UHP** ULTRA HIGH PRESSURE  
THERMOPLASTIC HOSE

[WWW.CRPINDUSTRIAL.COM](http://WWW.CRPINDUSTRIAL.COM)

BROUGHT TO YOU BY:

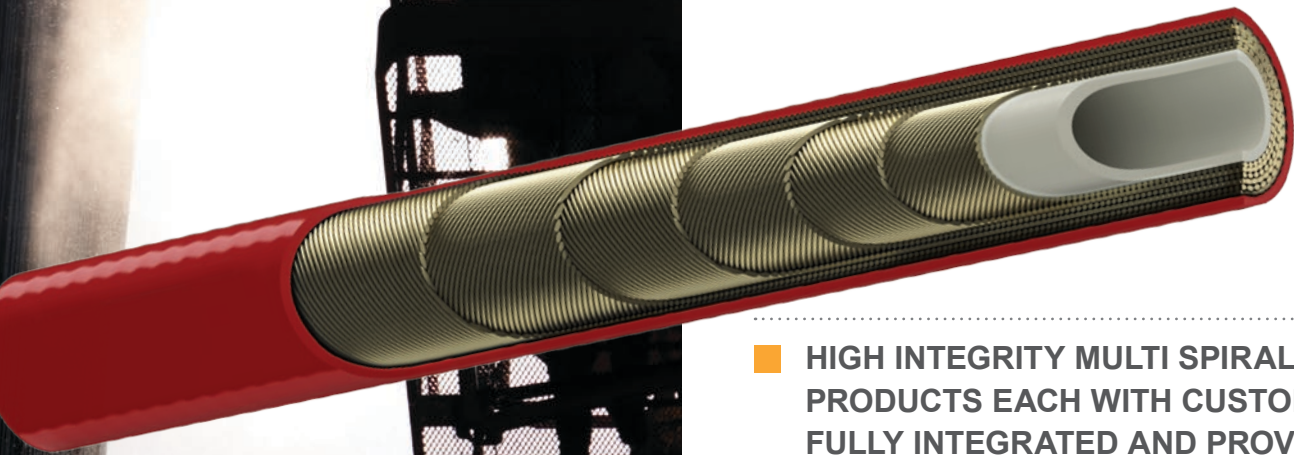


Your GO-TO Source for Specialty Hose.

# UHP

## WATERBLASTING & HYDRAULIC APPLICATIONS

Transfer Oil HELIX UHP Hose, brought to you by CRP Industrial, is a comprehensive range of fully engineered polymer hoses featuring combination spiral layered steel reinforcement. Each hose family has been carefully developed with a ribbed insert and ferrule designs to maintain the highest integrity of both the components and the final assembly.



- **HIGH INTEGRITY MULTI SPIRAL HOSE PRODUCTS EACH WITH CUSTOMISED FULLY INTEGRATED AND PROVEN INSERT / FERRULE COMBINATIONS**
- **PRODUCT RANGE UP TO 40,600 PSI WORKING PRESSURE**
- **SUPERIOR CHEMICAL AND ABRASION RESISTANT COVERS**
- **QUALITY SYSTEM CERTIFIED BY TÜV: ISO 9001:2008 AND ISO 14001:2004**



## At CRP, we're big enough to help, but small enough to care.

With more than 30 years in the thermoplastic hose business, CRP understands the challenges and needs of customers across all industries.

We take enormous pride in our ability to listen and communicate with our customers. That's why CRP excels at providing clients with exactly what they need. Be it fast delivery, competitive pricing, exceptional market knowledge, precise hose replacements, a vast selection, custom lengths, or a variety of end fittings. No matter what the issue, our highly trained customer service staff stands ready to solve every customer's request. Because of these commitments, CRP is proud to have achieved a lengthy list of high profile clients.

### ■ QUALITY CONTROL

With many of our high pressure hoses manufactured to DM&Q ANSI/ISO/ASQ 9001-2000 standards, product quality is certain. And because CRP is ISO 9001:2000 certified, customers can rest assured that we have a quality management system in place that delivers service satisfaction. In fact, CRP's Quality Control Technicians randomly pressure test hoses and in most cases our hoses are identical to the original equipment specified.

### ■ PROMPT TURNAROUND

For many of our customers, a speedy response is crucial. Fortunately, due to our vast selection of stock hose types and fittings, our turnaround time for orders is typically 24 to 48 hours. Of course, if time is of the essence, we may even be able to ship same day.

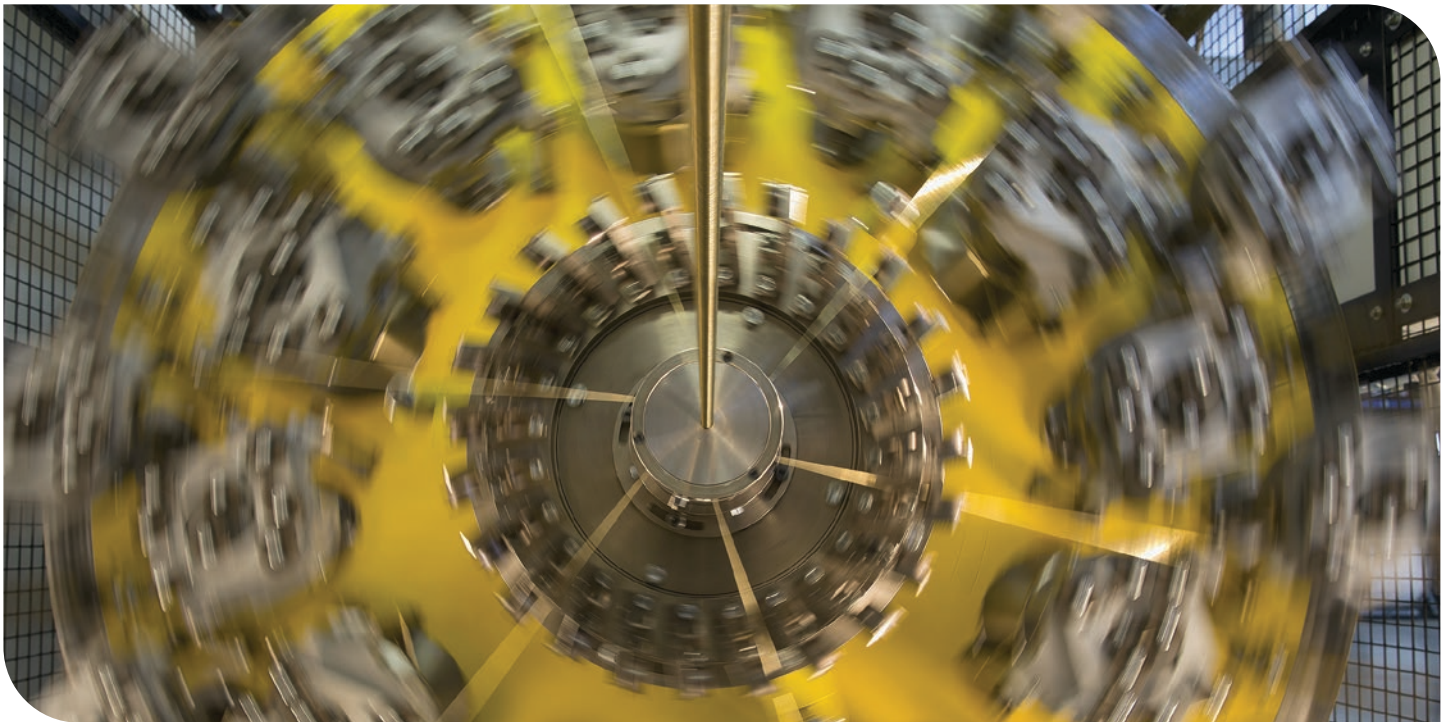
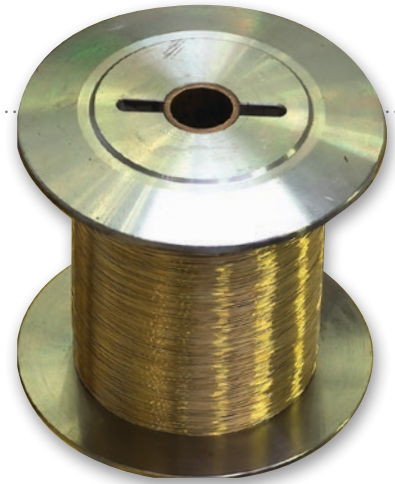
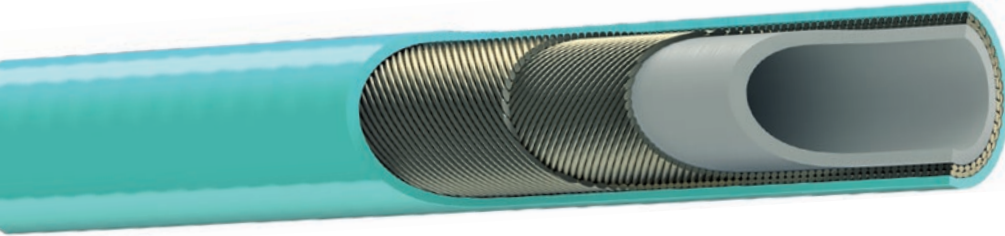
### ■ TOP-NOTCH SERVICE

A proud NAHAD member, CRP has been an expert in hose assembly fabrication for over 30 years. Backed by a team of extraordinary customer service representatives, we excel at understanding and meeting the needs of all our customers. As CRP continues to grow and evolve, one thing will remain constant: CRP will always be big enough to help, and small enough to care.



## // FULL TRACEABILITY ON EVERY SINGLE COMPONENT

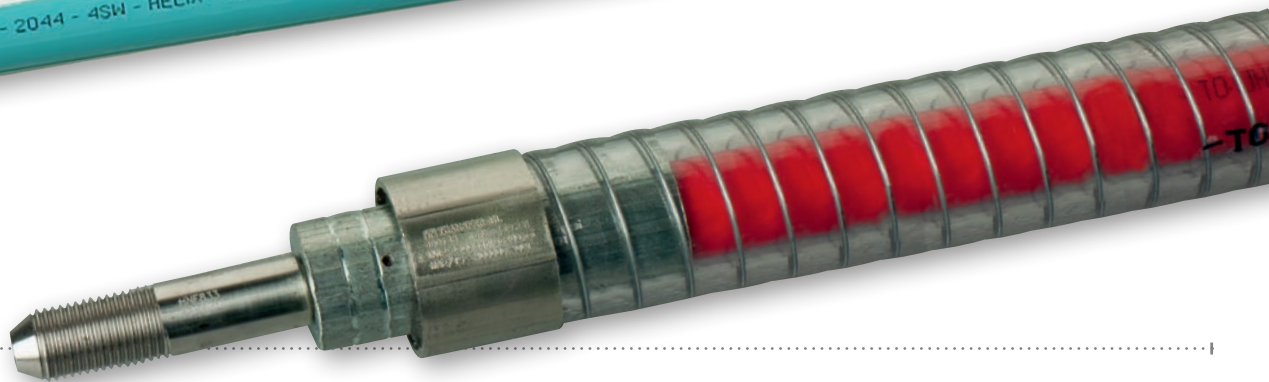
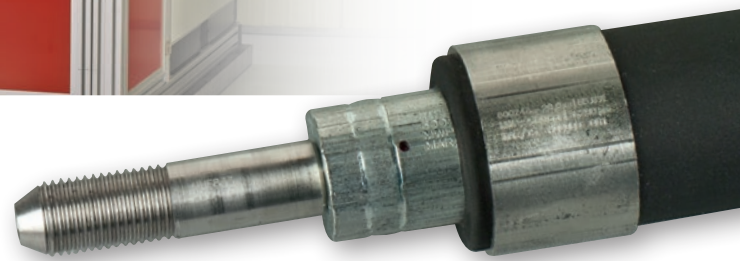
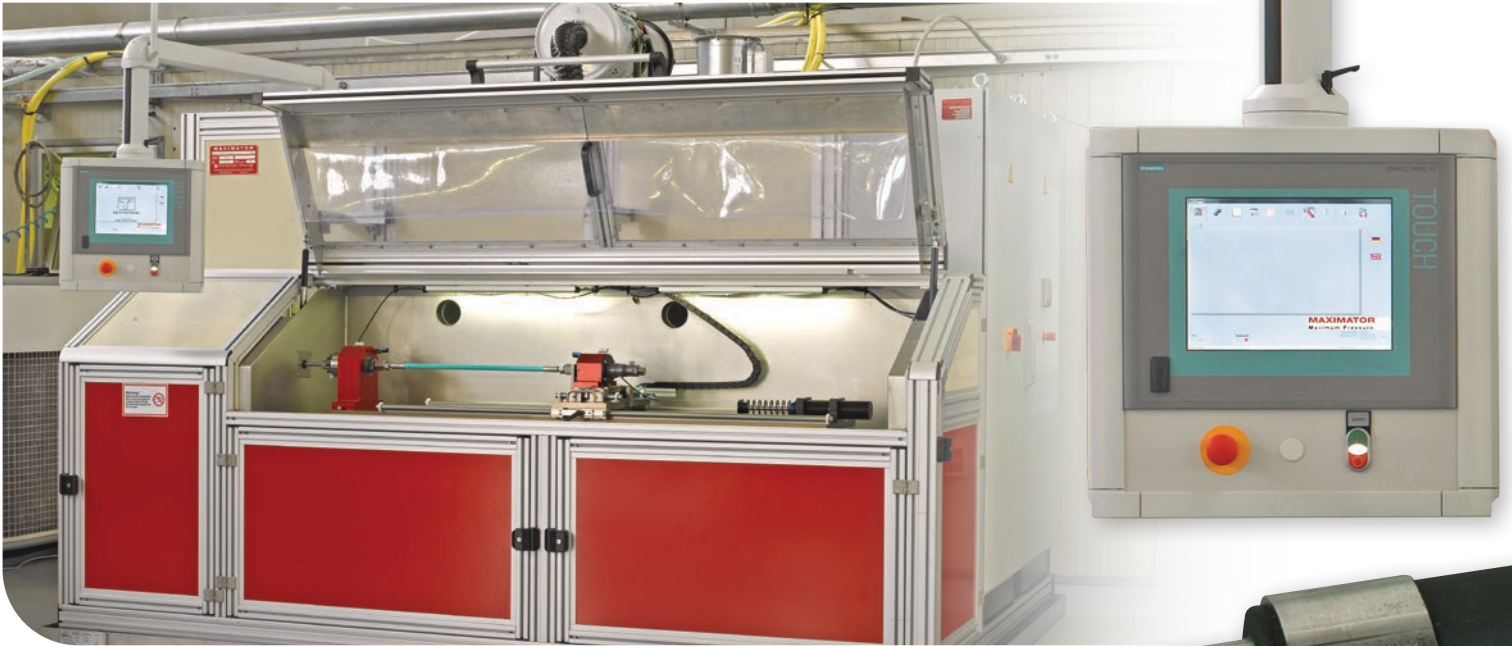
At the start of the each spiral reinforcement process there is a dimensional control check and pressure performance check of the hose on the high pressure burst test rig by the Quality Assurance Department.



After extrusion of the cover and printing of the hose with unique batch number the performance of the batch of hose is verified on the high pressure burst test rig by the Quality Assurance Department.



## // HIGH PRESSURE TESTING AND VALIDATION



## READY TO INSTALL SOLUTIONS

### // CUSTOMIZED HOSE ASSEMBLIES

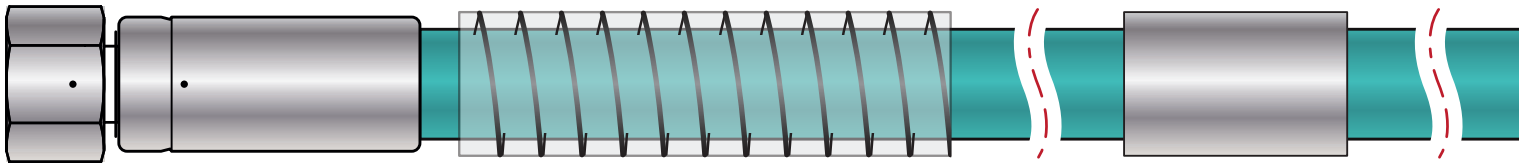
#### AVAILABLE WITH QUICK RELEASE COUPLINGS

High-quality quick-action couplings for practically every application requirement. Rapid, robust and secure coupling of virtually all fluid media.



When ordering hose assemblies, be sure the following information is included:

1. Quantity of assemblies required.
2. Hose Catalog part number and description
3. First coupling thread and end style.
4. Second coupling thread and end style.
5. Overall length of assembly.
6. Hose assembly customization through accessories (protection jacket bend restrictor, hose arrestor, catch ring)



#### PROTECTIONS JACKETS

Available in normal PVC cover and also extra tough cover with internal spiral. These hose protection jackets provide an optimum protection from external surface abrasion and damage.



#### CATCH RING



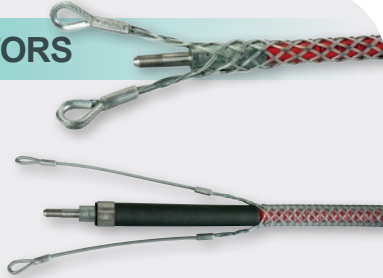
When using the Helix UHP hose for cleaning of heat exchangers, the catch ring will assist the operator. Indicate at which distance from the end fitting it needs to be crimped on the hose.

The rated working pressure of the application should always be used to determine the correct hose selection. Operation within the recommended rated working pressure, will maximize service life before replacement is required. When new, the hose will meet or exceed the minimum burst

pressure stated in the hose data sheet. The temperature range specified refers to the recommended temperature limits of fluids being conveyed or ambient temperatures. Exceeding these limits can result in degradation of material compounds, reduced hose service life and premature hose failure.

## HOSES ARRESTORS

Hose arrestors are the safest way to restrain high-pressure hoses from whiplash in the event of a blow out, protecting operators and/or equipment. Strongly recommended for high-pressure applications. Pull strength ranging from 13,72 kN to 24,77 kN.



## COLLAR AND GLAND NUT

The perfect sealing for your HP / MP fittings available in metric thread and inch thread versions.



## BEND RESTRICTOR

Bend restrictors are designed to protect the hose assembly from kinking and bending stresses at the hose and fitting junction that can occur during harsh operating conditions.



## STAINLESS STEEL RING

Hose protection jackets and bend restrictors can be crimped onto the hose assembly so as to avoid slip off or movement in particularly harsh operating conditions



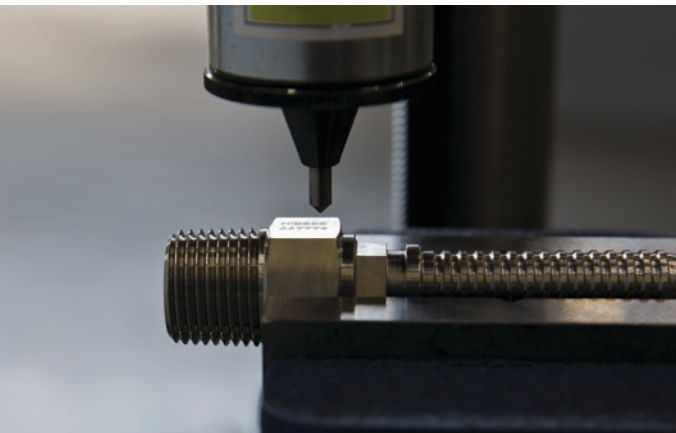
## // FITTING INSPECTION AND VALIDATION

The control by the Quality Assurance Department on inserts and ferrules is carried out on 100% of items. The dimensional control of the inserts is performed by using a Tesa laser beam profile device. Upon positive inspection, Quality Assurance unlocks the articles.



At the packaging department the fittings are marked. At the end of the process the inserts and ferrules are packaged inside specially designed boxes.

At the assembly department with the order of production, the technician prepares the hose that is going to be assembled. After the crimping process, the ferrules are marked and then are added, if the order specifies, the various accessories such as cover, sleeves, catch ring, arrestor and yellow warning sticker.





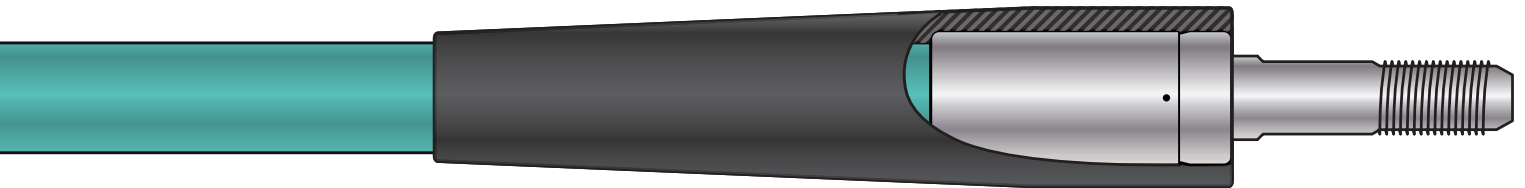
## // ASSEMBLY VALIDATION TEST RIG

To perform proof pressure testing on all production of multispiral hose assemblies a proof pressure test stand is utilized. This machine is able to pressurize assembled hoses with a programmable pressure curve.

This means that the test pressure, the raise time, the pressure stabilization time, the pressure hold time, and the maximum allowable pressure drop can be programmed by the operator according to the exact specification requirements.

This machine can test hoses with a diameter range from DN3 to DN25, in long lengths, with a test pressure range from 400 bar (5800 psi) to 6000 bar (87000 psi) using a water mixture as test medium.

The data of every single test performed is recorded as an official test report and automatically sent to, and stored within, the QA data system.



Quality Assurance inspects the hose assembly before it is proof tested at the high pressure test stand. The pressure test of hose assemblies is performed 100%. At the end of testing, Quality Assurance issues the certificate of conformity which is attached to each hose assembly.



202  
2SW  
HELIX

203  
2+2SW  
HELIX

204  
4SW  
HELIX

214  
4SWH  
HELIX

205  
4+2SW  
HELIX

206  
6SW  
HELIX

216  
6SWH  
HELIX

226  
6SWHX  
HELIX

## // 202 2SW - HELIX

Thermoplastic hose for Ultra High Pressure applications

from 690 to 1200 bar  
(10000 to 17400 psi)



UHP original parts.  
Use UHP inserts and ferrules

### FEATURES

#### INNER TUBE

Thermoplastic polymer.

#### REINFORCEMENT

Two spiral layers of steel wire

#### COVER

Thermoplastic polymer turquoise, non pinpricked, black ink-jet branding

#### INDUSTRIAL APPLICATIONS

Waterjet cutting. Tube cleaning, surface preparation and paint removal. Hydro demolition. Ships, tanks and vessel cleaning. Waterblast supply hose. General industrial cleaning. Removal of accumulated dirt from surfaces.

#### HYDRAULIC APPLICATIONS

Hydraulic jacks // Bolt tensioning // Testing applications // General UHP hydraulic applications

#### FEATURES

Ultra high working pressure // Excellent chemical resistance // Resistance to ozone, ultraviolet light and aging // High resistance against abrasion // Low volumetric expansion at maximum working pressure // Resistant to sea water // High impulse resistance // Long length capability // Excellent cut and crush resistance

#### TEMPERATURE RANGE

-30°C to +70°C (-22°F to +158°F).

#### DESCRIPTION

Ultra High Pressure hose utilizing high tensile steel wire applied in counter rotating multiple spiral layers.

Tube and cover of engineering polymer with intermediate adhesion layers.

Available as factory made assemblies: please contact our sales office for further details.

### APPLICATIONS



### FEATURES

STANDARD



Coils



Pallet

OPTIONAL



Reel



Hose assembly



Stainless steel assembly

### ACCESSORIES



Stainless steel catch ring



Protection jacket-spiral



Protection jacket



Hose arrestor

part no.	color	hose size			ID		OD		WP		BP		safety factor	bend radius		weight		ferrule part no.	
		dash	inch	DN	mm	inch	mm	inch	bar	psi	bar	psi		mm	inch	g/m	lbs/ft	carbon	stainless
202BUHP	Green	-	1/8	DN3	3.5	0.138	7.2	0.283	1040	15000	2600	37500	2.5:1	60	2.362	90	0.06	202BUHPSLEEVE	-
2020UHP	Green	-2	5/32	DN4	4.1	0.161	8.2	0.323	1200	17400	3000	43500	2.5:1	70	2.756	110	0.074	2020UHPSLEEVE	2020UHPSLEEVESS
2021UHP	Green	-3	3/16	DN5	5.2	0.205	9.8	0.386	1040	15000	2600	37500	2.5:1	90	3.543	150	0.101	2021UHPSLEEVE	2021UHPSLEEVESS
2022UHP	Green	-4	1/4	DN6	6.4	0.252	11.5	0.453	1040	15000	2600	37500	2.5:1	110	4.331	210	0.141	2022UHPSLEEVE	2022UHPSLEEVESS
2023UHP	Yellow	-5	5/16	DN8	7.9	0.311	13.7	0.539	900	13000	2250	32500	2.5:1	130	5.118	260	0.175	2023UHPSLEEVE	-
2024UHP	Yellow	-6	3/8	DN10	9.9	0.390	16.4	0.646	690	10000	1725	25000	2.5:1	150	5.906	320	0.215	2024UHPSLEEVE	-
2025UHP	Yellow	-8	1/2	DN12	12.8	0.504	20.4	0.803	690	10000	1725	25000	2.5:1	190	7.48	500	0.336	2025UHPSLEEVE	-

\*The safety factor between the burst pressure and working pressure depend on the application requirements. Four to one safety factor should be used in dynamic impinging hydraulic applications.

## // 203 2+2SW - HELIX

Thermoplastic hose for Ultra High Pressure applications

from 1040 to 1400 bar  
(15000 to 20300 psi)



UHP original parts.  
Use UHP inserts and ferrules

### FEATURES

#### INNER TUBE

Thermoplastic polymer.

#### REINFORCEMENT

Two + two spiral layers of steel wire

#### COVER

Thermoplastic Polyurethane turquoise, non pinpricked, black ink-jet branding

#### INDUSTRIAL APPLICATIONS

Waterjet cutting. Tube cleaning, surface preparation and paint removal. Hydro demolition. Ships, tanks and vessel cleaning. Waterblast supply hose. General industrial cleaning. Removal of accumulated dirt from surfaces.

#### HYDRAULIC APPLICATIONS

Hydraulic jacks // Bolt tensioning // Testing applications // General UHP hydraulic applications

#### FEATURES

Ultra high working pressure // Excellent chemical resistance // Resistance to ozone, ultraviolet light and aging // High resistance against abrasion // Low volumetric expansion at maximum working pressure // Resistant to sea water // High impulse resistance // Long length capability // Excellent cut and crush resistance

#### TEMPERATURE RANGE

-30°C to +70°C (-22°F to +158°F).

#### DESCRIPTION

Ultra High Pressure hose utilizing high tensile steel wire applied in counter rotating multiple spiral layers.

Tube and cover of engineering polymer with intermediate adhesion layers.

Available as factory made assemblies: please contact our sales office for further details.

### APPLICATIONS



### FEATURES

#### STANDARD



Coils



Pallet

#### OPTIONAL



Reel



Hose assembly



Stainless steel assembly

### ACCESSORIES



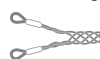
Stainless steel catch ring



Protection jacket-spiral



Protection jacket



Hose arrester

202  
2SW  
HELIX

203  
2+2SW  
HELIX

204  
4SW  
HELIX

214  
4SWH  
HELIX

205  
4+2SW  
HELIX

206  
6SW  
HELIX

216  
6SWH  
HELIX

226  
6SWHX  
HELIX

part no.	color	hose size			ID		OD		WP		BP		safety factor	bend radius		weight		ferrule part no.	
		dash	inch	DN	mm	inch	mm	inch	bar	psi	bar	psi		mm	inch	g/m	lbs/ft	carbon	stainless
2030UHP	Blue	-	5/32	DN4	4.0	0.157	10.3	0.406	1400	20300	3500	50750	2.5:1	60	2.362	180	0.121	2030UHPSLEEVE	2030UHPSLEEVESS
2032UHP	Green	-4	1/4	DN6	6.2	0.244	13.2	0.520	1280	18500	3200	46250	2.5:1	90	3.543	280	0.188	2032UHPSLEEVE	2032UHPSLEEVESS
2033UHP	Green	-5	5/16	DN8	7.9	0.311	15.4	0.606	1200	17400	3000	43500	2.5:1	100	3.937	370	0.249	2033UHPSLEEVE	2033UHPSLEEVESS
2034UHP	Green	-6	3/8	DN10	9.9	0.390	18.2	0.717	1100	15900	2750	39750	2.5:1	120	4.724	520	0.349	2034UHPSLEEVE	2034UHPSLEEVESS
2035UHP	Green	-8	1/2	DN12	12.8	0.504	22.1	0.870	1040	15000	2600	37500	2.5:1	140	5.512	700	0.470	2035UHPSLEEVE	2035UHPSLEEVESS
2037UHP	Yellow	-12	3/4	DN20	18.8	0.740	29.9	1.117	760	11000	1900	27500	2.5:1	220	8.661	1280	0.853	2037UHPSLEEVE	2037UHPSLEEVESS

\*The safety factor between the burst pressure and working pressure depend on the application requirements. Four to one safety factor should be used in dynamic impulsing hydraulic applications.

202  
2SW  
HELIX

203  
2+2SW  
HELIX

204  
4SW  
HELIX

214  
4SWH  
HELIX

205  
4+2SW  
HELIX

206  
6SW  
HELIX

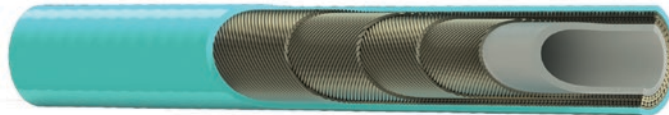
216  
6SWH  
HELIX

226  
6SWHX  
HELIX

## // 204 4SW - HELIX

Thermoplastic hose for Ultra High Pressure applications

from 900 to 2200 bar  
(13000 to 31900 psi)



UHP original parts.  
Use UHP inserts and ferrules

### FEATURES

#### INNER TUBE

Thermoplastic polymer.

#### REINFORCEMENT

Four spiral layers of steel wire

#### COVER

Thermoplastic polymer turquoise, non pinpricked, black ink-jet branding

#### INDUSTRIAL APPLICATIONS

Waterjet cutting. Tube cleaning, surface preparation and paint removal. Hydro demolition. Ships, tanks and vessel cleaning. Waterblast supply hose. General industrial cleaning. Removal of accumulated dirt from surfaces.

#### HYDRAULIC APPLICATIONS

Hydraulic jacks // Bolt tensioning // Testing applications // General UHP hydraulic applications

#### FEATURES

Ultra high working pressure // Excellent chemical resistance // Resistance to ozone, ultraviolet light and aging // High resistance against abrasion // Low volumetric expansion at maximum working pressure // Resistant to sea water // High impulse resistance // Long length capability // Excellent cut and crush resistance

#### TEMPERATURE RANGE

-30°C to +70°C (-22°F to +158°F).

#### DESCRIPTION

Ultra High Pressure hose utilizing high tensile steel wire applied in counter rotating multiple spiral layers.

Tube and cover of engineering polymer with intermediate adhesion layers.

Available as factory made assemblies: please contact our sales office for further details.

### APPLICATIONS



### FEATURES

STANDARD



Coils



Pallet

OPTIONAL



Reel



Hose assembly



Stainless steel assembly

### ACCESSORIES



Stainless steel catch ring



Protection jacket-spiral



Protection jacket



Hose arrester

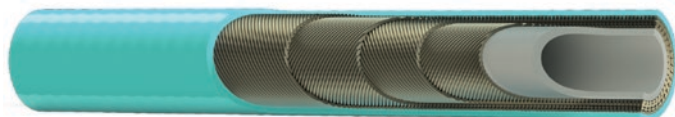
part no.	color	hose size			ID		OD		WP		BP		safety factor	bend radius		weight		ferrule part no.	
		dash	inch	DN	mm	inch	mm	inch	bar	psi	bar	psi		mm	inch	g/m	lbs/ft	carbon	stainless
2040UHP	Gray	-	5/32	DN4	4.0	0.157	9.9	0.390	2200	31900	5500	79750	2.5:1	120	4.724	210	0.141	2040UHPSLEEVE	2040UHPSLEEVESS
2041UHP	Blue	-3	3/16	DN5	5.1	0.201	11.6	0.457	1800	26100	4500	65250	2.5:1	140	5.512	270	0.181	2041UHPSLEEVE	2041UHPSLEEVESS
2042UHP	Blue	-4	1/4	DN6	6.3	0.248	13.3	0.524	1640	23700	4100	59250	2.5:1	170	6.693	400	0.269	2042UHPSLEEVE	2042UHPSLEEVESS
2043UHP	Blue	-5	5/16	DN8	8.2	0.323	15.6	0.614	1500	21700	3750	54250	2.5:1	190	7.48	480	0.323	2043UHPSLEEVE	2043UHPSLEEVESS
2044UHP	Blue	-6	3/8	DN10	9.9	0.390	18.8	0.740	1400	20300	3500	50750	2.5:1	190	7.48	710	0.477	2044UHPSLEEVE	2044UHPSLEEVESS
2045UHP	Green	-8	1/2	DN12	12.8	0.504	21.6	0.850	1300	18800	3250	47000	2.5:1	200	7.874	840	0.565	2045UHPSLEEVE	2045UHPSLEEVESS
2047UHP	Yellow	-12	3/4	DN20	18.8	0.740	30.0	1.181	1000	14500	2500	36250	2.5:1	250	9.843	1450	0.974	2047UHPSLEEVE	-
2048UHP	Yellow	-16	1	DN25	24.8	0.976	39.0	1.535	900	13000	2250	32500	2.5:1	300	11.811	1750	1.176	-	2048UHPSLEEVESS

\*The safety factor between the burst pressure and working pressure depend on the application requirements. Four to one safety factor should be used in dynamic impinging hydraulic applications.

## // 214 4SWH - HELIX

Thermoplastic hose for Ultra High Pressure applications

up to 1400 bar  
(up to 20300 psi)



UHP original parts.  
Use UHP inserts and ferrules

### FEATURES

#### INNER TUBE

Thermoplastic polymer.

#### REINFORCEMENT

Four spiral layers of steel wire

#### COVER

Thermoplastic polymer turquoise, non pinpricked, black ink-jet branding

#### INDUSTRIAL APPLICATIONS

Waterjet cutting. Tube cleaning, surface preparation and paint removal. Hydro demolition. Ships, tanks and vessel cleaning. Waterblast supply hose. General industrial cleaning. Removal of accumulated dirt from surfaces.

#### HYDRAULIC APPLICATIONS

Hydraulic jacks // Bolt tensioning // Testing applications // General UHP hydraulic applications

#### FEATURES

Ultra high working pressure // Excellent chemical resistance // Resistance to ozone, ultraviolet light and aging // High resistance against abrasion // Low volumetric expansion at maximum working pressure // Resistant to sea water // High impulse resistance // Long length capability // Excellent cut and crush resistance

#### TEMPERATURE RANGE

-30°C to +70°C (-22°F to +158°F).

#### DESCRIPTION

Ultra High Pressure hose utilizing high tensile steel wire applied in counter rotating multiple spiral layers.

Tube and cover of engineering polymer with intermediate adhesion layers.

Available as factory made assemblies: please contact our sales office for further details.

### APPLICATIONS



### FEATURES

STANDARD



Coils



Pallet

OPTIONAL



Reel

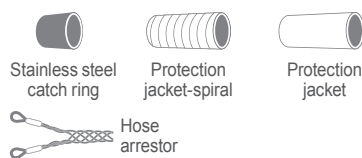


Hose assembly



Stainless steel assembly

### ACCESSORIES



202  
2SW  
HELIX

203  
2+2SW  
HELIX

204  
4SW  
HELIX

214  
4SWH  
HELIX

205  
4+2SW  
HELIX

206  
6SW  
HELIX

216  
6SWH  
HELIX

226  
6SWHX  
HELIX

part no.	color	hose size			ID		OD		WP		BP		safety factor	bend radius		weight		ferrule part no.	
		dash	inch	DN	mm	inch	mm	inch	bar	psi	bar	psi		mm	inch	g/m	lbs/ft	carbon	stainless
2145UHP	Blue	-8	1/2	DN12	12.8	0.504	22.5	0.886	1400	20300	3500	50750	2.5:1	180	7.087	970	0.652	2145UHPSLEEVE	2145UHPSLEEVESS

\*The safety factor between the burst pressure and working pressure depend on the application requirements. Four to one safety factor should be used in dynamic impulsing hydraulic applications.

202  
2SW  
HELIX

203  
2+2SW  
HELIX

204  
4SW  
HELIX

214  
4SWH  
HELIX

205  
4+2SW  
HELIX

206  
6SW  
HELIX

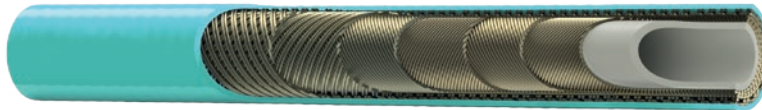
216  
6SWH  
HELIX

226  
6SWHX  
HELIX

## // 205 4+2SW - HELIX

Thermoplastic hose for Ultra High Pressure applications

up to 1200 bar  
(up to 17400 psi)



UHP original parts.  
Use UHP inserts and ferrules

### FEATURES

#### INNER TUBE

Thermoplastic polymer.

#### REINFORCEMENT

Four + two spiral layers of steel wire

#### COVER

Thermoplastic Polyurethane turquoise, non pinpricked, black ink-jet branding

#### INDUSTRIAL APPLICATIONS

Waterjet cutting. Tube cleaning, surface preparation and paint removal. Hydro demolition. Ships, tanks and vessel cleaning. Waterblast supply hose. General industrial cleaning. Removal of accumulated dirt from surfaces.

#### HYDRAULIC APPLICATIONS

Hydraulic jacks // Bolt tensioning // Testing applications // General UHP hydraulic applications

#### FEATURES

Ultra high working pressure // Excellent chemical resistance // Resistance to ozone, ultraviolet light and aging // High resistance against abrasion // Low volumetric expansion at maximum working pressure // Resistant to sea water // High impulse resistance // Long length capability // Excellent cut and crush resistance

#### TEMPERATURE RANGE

-30°C to +70°C (-22°F to +158°F).

#### DESCRIPTION

Ultra High Pressure hose utilizing high tensile steel wire applied in counter rotating multiple spiral layers.

Tube and cover of engineering polymer with intermediate adhesion layers.

Available as factory made assemblies: please contact our sales office for further details.

### APPLICATIONS



### FEATURES

STANDARD



Coils



Pallet

OPTIONAL



Reel



Hose assembly



Stainless steel assembly

### ACCESSORIES



Stainless steel catch ring



Protection jacket-spiral



Protection jacket



Hose arrester

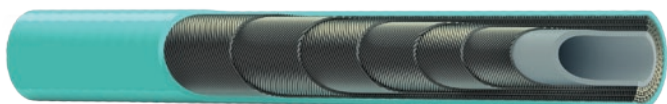
part no.	color	hose size			ID		OD		WP		BP		safety factor	bend radius		weight		ferrule part no.	
		dash	inch	DN	mm	inch	mm	inch	bar	psi	bar	psi		mm	inch	g/m	lbs/ft	carbon	stainless
2057UHP	Green	-12	3/4	DN20	18.80	0.740	32.60	1.283	1200	17400	3000	43500	2.5:1	170	6.693	1860	1.250	2057UHPSLEEVE	-

\*The safety factor between the burst pressure and working pressure depend on the application requirements. Four to one safety factor should be used in dynamic impulsing hydraulic applications.

## // 206 6SW - HELIX

Thermoplastic hose for Ultra High Pressure applications

from 1200 to 2800 bar  
(17400 to 40600 psi)



UHP original parts.  
Use UHP inserts and ferrules

### FEATURES

#### INNER TUBE

Thermoplastic polymer.

#### REINFORCEMENT

Six spiral layers of higher tensile steel wire

#### COVER

Thermoplastic polymer turquoise, non pinpricked, black ink-jet branding

#### INDUSTRIAL APPLICATIONS

Waterjet cutting. Tube cleaning, surface preparation and paint removal. Hydro demolition. Ships, tanks and vessel cleaning. Waterblast supply hose. General industrial cleaning. Removal of accumulated dirt from surfaces.

#### HYDRAULIC APPLICATIONS

Hydraulic jacks // Bolt tensioning // Testing applications // General UHP hydraulic applications

#### FEATURES

Ultra high working pressure // Excellent chemical resistance // Resistance to ozone, ultraviolet light and aging // High resistance against abrasion // Low volumetric expansion at maximum working pressure // Resistant to sea water // High impulse resistance // Long length capability // Excellent cut and crush resistance

#### TEMPERATURE RANGE

-30°C to +70°C (-22°F to +158°F).

#### DESCRIPTION

Ultra High Pressure hose utilizing high tensile steel wire applied in counter rotating multiple spiral layers.

Tube and cover of engineering polymer with intermediate adhesion layers.

Available as factory made assemblies: please contact our sales office for further details.

### APPLICATIONS



### FEATURES

STANDARD



Coils



Pallet

OPTIONAL



Reel



Hose assembly



Stainless steel assembly

### ACCESSORIES



Stainless steel catch ring



Protection jacket-spiral



Protection jacket



Hose arrester



Bend restrictor

part no.	color	hose size			ID		OD		WP		BP		safety factor	bend radius		weight		ferrule part no.	
		dash	inch	DN	mm	inch	mm	inch	bar	psi	bar	psi		mm	inch	g/m	lbs/ft	carbon	stainless
2060UHP	Orange	-	5/32	DN4	4.0	0.157	11.8	0.465	2800	40600	7000	101500	2.5:1	170	6.693	360	0.242	2060UHPSLEEVE	-
2061UHP	Gray	-3	3/16	DN5	5.0	0.197	14.4	0.567	2500	36200	6250	90500	2.5:1	190	7.48	550	0.37	2061UHPSLEEVE	-
2063UHP	Gray	-5	5/16	DN8	7.9	0.311	18.0	0.709	2100	30400	5250	76000	2.5:1	240	9.449	770	0.517	2063UHPSLEEVE	-
2064UHP	Blue	-6	3/8	DN10	9.9	0.390	20.8	0.819	1920	27800	4800	69500	2.5:1	250	9.843	1070	0.719	2064UHPSLEEVE	-
2065UHP	Blue	-8	1/2	DN12	12.8	0.504	25.4	1.000	1800	26100	4500	65250	2.5:1	300	11.811	1570	1.055	2065UHPSLEEVE	-
2067UHP	Blue	-12	3/4	DN20	18.8	0.740	33.8	1.331	1400	20300	3500	50750	2.5:1	350	13.78	2075	1.394	2067UHPSLEEVE	-
2068UHP	Green	-16	1	DN25	24.8	0.976	42.0	1.654	1200	17400	3000	43500	2.5:1	600	23.622	2680	1.801	2068UHPSLEEVE	-

\*The safety factor between the burst pressure and working pressure depend on the application requirements. Four to one safety factor should be used in dynamic impulsing hydraulic applications.

202  
2SW  
HELIX

203  
2+2SW  
HELIX

204  
4SW  
HELIX

214  
4SWH  
HELIX

205  
4+2SW  
HELIX

206  
6SW  
HELIX

216  
6SWH  
HELIX

226  
6SWHX  
HELIX

202  
2SW  
HELIX

203  
2+2SW  
HELIX

204  
4SW  
HELIX

214  
4SWH  
HELIX

205  
4+2SW  
HELIX

206  
6SW  
HELIX

216  
6SWH  
HELIX

226  
6SWHX  
HELIX

## // 216 6SWH - HELIX

Thermoplastic hose for Ultra High Pressure applications

from 2000 to 2800 bar  
(29000 to 40600 psi)



UHP original parts.  
Use UHP inserts and ferrules

### FEATURES

#### INNER TUBE

Thermoplastic polymer.

#### REINFORCEMENT

Six spiral layers of steel wire

#### COVER

Thermoplastic polymer red, non pinpricked, black ink-jet branding

#### INDUSTRIAL APPLICATIONS

Waterjet cutting. Tube cleaning, surface preparation and paint removal. Hydro demolition. Ships, tanks and vessel cleaning. Waterblast supply hose. General industrial cleaning. Removal of accumulated dirt from surfaces.

#### HYDRAULIC APPLICATIONS

Hydraulic jacks // Bolt tensioning // Testing applications // General UHP hydraulic applications

#### FEATURES

Ultra high working pressure // Excellent chemical resistance // Resistance to ozone, ultraviolet light and aging // High resistance against abrasion // Low volumetric expansion at maximum working pressure // Resistant to sea water // High impulse resistance // Long length capability // Excellent cut and crush resistance

#### TEMPERATURE RANGE

-30°C to +70°C (-22°F to +158°F).

#### DESCRIPTION

Ultra High Pressure hose utilizing high tensile steel wire applied in counter rotating multiple spiral layers.

Tube and cover of engineering polymer with intermediate adhesion layers.

Available as factory made assemblies: please contact our sales office for further details.

### APPLICATIONS



### FEATURES

STANDARD



Coils



Pallet

OPTIONAL



Reel



Hose assembly



Stainless steel assembly

### ACCESSORIES



Stainless steel catch ring



Protection jacket-spiral



Protection jacket



Hose arrester



Bend restrictor

part no.	color	hose size			ID		OD		WP		BP		safety factor	bend radius		weight		ferrule part no.	
		dash	inch	DN	mm	inch	mm	inch	bar	psi	bar	psi		mm	inch	g/m	lbs/ft	carbon	stainless
2161UHP	Orange	-3	3/16	DN5	5.0	0.197	14.8	0.583	2800	40600	7000	101500	2.5:1	210	8.268	600	0.403	2161UHPSLEEVE	-
2162UHP	Orange	-4	1/4	DN6	6.3	0.248	16.5	0.650	2800	40600	7000	101500	2.5:1	250	9.843	770	0.517	2162UHPSLEEVE	-
2163UHP	Gray	-5	5/16	DN8	8.1	0.319	19.0	0.748	2500	36200	6250	90500	2.5:1	250	9.843	980	0.659	2163UHPSLEEVE	-
2165UHP	Blue	-8	1/2	DN12	12.8	0.504	25.8	1.016	2000	29000	5000	72500	2.5:1	300	11.811	1660	1.116	2165UHPSLEEVE	-

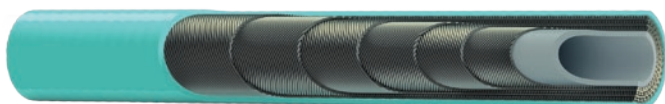
\*The safety factor between the burst pressure and working pressure depend on the application requirements. Four to one safety factor should be used in dynamic impulsing hydraulic applications.



## // 226 6SWHX - HELIX

Thermoplastic hose for Ultra High Pressure applications

up to 2800 bar  
(up to 40600 psi)



UHP original parts.  
Use UHP inserts and ferrules

### FEATURES

#### INNER TUBE

Thermoplastic polymer.

#### REINFORCEMENT

Six spiral layers of steel wire

#### COVER

Thermoplastic polymer turquoise, non pinpricked, black ink-jet branding

#### INDUSTRIAL APPLICATIONS

Waterjet cutting. Tube cleaning, surface preparation and paint removal. Hydro demolition. Ships, tanks and vessel cleaning. Waterblast supply hose. General industrial cleaning. Removal of accumulated dirt from surfaces.

#### HYDRAULIC APPLICATIONS

Hydraulic jacks // Bolt tensioning // Testing applications // General UHP hydraulic applications

#### FEATURES

Ultra high working pressure // Excellent chemical resistance // Resistance to ozone, ultraviolet light and aging // High resistance against abrasion // Low volumetric expansion at maximum working pressure // Resistant to sea water // High impulse resistance // Long length capability // Excellent cut and crush resistance

#### TEMPERATURE RANGE

-30°C to +70°C (-22°F to +158°F).

#### DESCRIPTION

Ultra High Pressure hose utilizing high tensile steel wire applied in counter rotating multiple spiral layers.

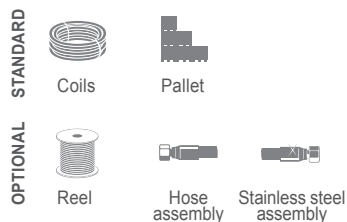
Tube and cover of engineering polymer with intermediate adhesion layers.

Available also as factory made assemblies: please contact our sales office for further details.

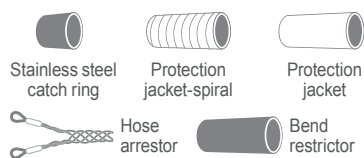
### APPLICATIONS



### FEATURES



### ACCESSORIES



202  
2SW  
HELIX

203  
2+2SW  
HELIX

204  
4SW  
HELIX

214  
4SWH  
HELIX

205  
4+2SW  
HELIX

206  
6SW  
HELIX

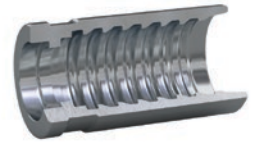
216  
6SWH  
HELIX

226  
6SWHX  
HELIX

part no.	color	hose size			ID		OD		WP		BP		safety factor	bend radius		weight		ferrule part no.	
		dash	inch	DN	mm	inch	mm	inch	bar	psi	bar	psi		mm	inch	g/m	lbs/ft	carbon	stainless
2263UHP	Orange	-5	5/16	DN8	7.6	0.299	19.4	0.764	2800	40600	7000	101500	2.5:1	250	9.843	1078	0.724	2263UHPSLEEVE	-

\*The safety factor between the burst pressure and working pressure depend on the application requirements. Four to one safety factor should be used in dynamic impulsing hydraulic applications.

## // 2SW Hose ferrules



carbon steel part no.	stainless steel part no.	description	hose size		C mm	D mm	L mm
			DN	inches			
202BUHPSLEEVE	-	1/8" FERRULE HELIX 2SW	DN3	1/8"	12.6	8.4	33.5
2020UHPSLEEVE	2020UHPSLEEVESS	5/32" FERRULE HELIX 2SW	DN4	5/32"	14.2	9.2	34.0
2021UHPSLEEVE	2021UHPSLEEVESS	3/16" FERRULE HELIX 2SW	DN5	3/16"	16.0	10.6	40.0
2022UHPSLEEVE	2022UHPSLEEVESS	1/4" FERRULE HELIX 2SW	DN6	1/4"	18.0	12.7	42.0
2023UHPSLEEVE	-	5/16" FERRULE HELIX 2SW	DN8	5/16"	21.0	14.8	41.0
2024UHPSLEEVE	-	3/8" FERRULE HELIX 2SW	DN10	3/8"	22.5	17.0	50.0
2025UHPSLEEVE	-	1/2" FERRULE HELIX 2SW	DN12	1/2"	29.0	21.2	55.0

## // 2+2SW Hose ferrules



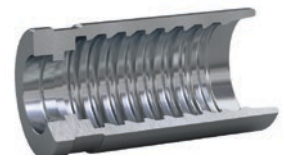
carbon steel part no.	stainless steel part no.	description	hose size		C mm	D mm	L mm
			DN	inches			
2030UHPSLEEVE	2030UHPSLEEVESS	5/32" FERRULE HELIX 2+2SW	DN4	5/32"	16.0	11.3	34.0
2032UHPSLEEVE	2032UHPSLEEVESS	1/4" FERRULE HELIX 2+2SW	DN6	1/4"	19.5	14.2	42.0
2033UHPSLEEVE	-	5/16" FERRULE HELIX 2+2SW	DN8	5/16"	23.4	16.6	44.0
2034UHPSLEEVE	2034UHPSLEEVESS	3/8" FERRULE HELIX 2+2SW	DN10	3/8"	25.7	19.5	50.0
2035UHPSLEEVE	2035UHPSLEEVESS	1/2" FERRULE HELIX 2+2SW	DN12	1/2"	31.0	23.0	60.0
2037UHPSLEEVE	2037UHPSLEEVESS	3/4" FERRULE HELIX 2+2SW	DN20	3/4"	40.5	32.2	69.0

## // 4SW Hose ferrules



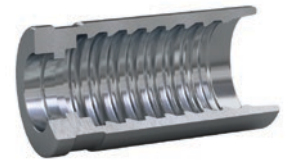
carbon steel part no.	stainless steel part no.	description	hose size		C mm	D mm	L mm
			DN	inches			
2040UHPSLEEVE	2040UHPSLEEVESS	5/32" FERRULE HELIX 4SW	DN4	5/32"	16.8	12.0	45.0
2041UHPSLEEVE	2041UHPSLEEVESS	3/16" FERRULE HELIX 4SW	DN5	3/16"	18.0	12.5	40.0
2042UHPSLEEVE	2042UHPSLEEVESS	1/4" FERRULE HELIX 4SW	DN6	1/4"	19.5	14.0	43.0
2043UHPSLEEVE	2043UHPSLEEVESS	5/16" FERRULE HELIX 4SW	DN8	5/16"	23.0	16.4	45.0
2044UHPSLEEVE	2044UHPSLEEVESS	3/8" FERRULE HELIX 4SW	DN10	3/8"	26.0	20.0	50.0
2045UHPSLEEVE	2045UHPSLEEVESS	1/2" FERRULE HELIX 4SW	DN12	1/2"	32.0	23.2	62.0
2047UHPSLEEVE	-	3/4" FERRULE HELIX 4SW	DN20	3/4"	41.0	31.6	70.0
-	2048UHPSLEEVESS	1" FERRULE HELIX 4SW	DN25	1"	49.0	39.5	75.0

## // 4SWH Hose ferrules



carbon steel part no.	stainless steel part no.	description	hose size		C mm	D mm	L mm
			DN	inches			
2145UHPSLEEVE	2145UHPSLEEVESS	1/2" FERRULE HELIX 4SWH	DN12	1/8"	33.0	24.5	62.0

## // 4+2SW Hose ferrules



carbon steel part no.	stainless steel part no.	description	hose size		C	D	L
			DN	inches	mm	mm	mm
2057UHPSLEEVE	-	3/4" FERRULE HELIX 4+2SW	DN20	3/4"	45.0	34.0	71.5

## // 6SW Hose ferrules



carbon steel part no.	stainless steel part no.	description	hose size		C	D	L
			DN	inches	mm	mm	mm
2060UHPSLEEVE	-	5/32" FERRULE HELIX 6SW	DN4	5/32"	17.6	12.8	45.0
2061UHPSLEEVE	-	3/16" FERRULE HELIX 6SW	DN5	3/16"	22.5	15.0	63.5
2063UHPSLEEVE	-	5/16" FERRULE HELIX 6SW	DN8	5/16"	26.4	18.4	63.5
2064UHPSLEEVE	-	3/8" FERRULE HELIX 6SW	DN10	3/8"	31.2	22.5	52.0
2065UHPSLEEVE	-	1/2" FERRULE HELIX 6SW	DN12	1/2"	35.5	26.8	66.0
2067UHPSLEEVE	-	3/4" FERRULE HELIX 6SW	DN20	3/4"	46.2	35.2	72.0
2068UHPSLEEVE	-	1" FERRULE HELIX 6SW	DN25	1"	52.7	42.5	78.0

## // 6SWH Hose ferrules



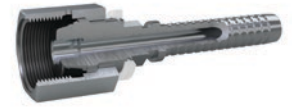
carbon steel part no.	stainless steel part no.	description	hose size		C	D	L
			DN	inches	mm	mm	mm
2161UHPSLEEVE	-	3/16" FERRULE HELIX 6SWH	DN5	3/16"	22.7	15.2	64.0
2162UHPSLEEVE	-	1/4" FERRULE HELIX 6SWH	DN6	1/4"	24.4	17.2	64.0
2163UHPSLEEVE	-	5/16" FERRULE HELIX 6SWH	DN8	5/16"	28.0	20.0	64.0
2165UHPSLEEVE	-	1/2" FERRULE HELIX 6SWH	DN12	1/2"	36.2	27.2	66.0

## // 6SWHX Hose ferrules



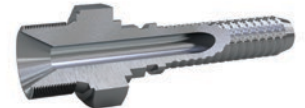
carbon steel part no.	stainless steel part no.	description	hose size		C	D	L
			DN	inches	mm	mm	mm
2263UHPSLEEVE	-	5/16" FERRULE HELIX 6SWHX	DN8	5/16"	29.2	22.5	66.5

## // HB - BSPP Female - UHP



carbon steel part no.	stainless steel part no.	description	cone °	insert tail ID mm	thread F	hose size		hose compatibility							
						DN	inch	2SW	2+2SW	4SW	4SWH	4+2SW	6SW	6SWH	
HBA12G	-	1/4" F-BSPP A 1/8"	24-60	2.0	1/4"-19 GAS	DN3	1/8"	202BUHP							
HBB120	-	1/4" F-BSPP B/A 5/32"	24-60	2.5	1/4"-19 GAS	DN4	5/32"	2020UHP	2030UHP						
HBC120	-	1/4" F-BSPP C 5/32"	24-60	1.8	1/4"-19 GAS	DN4	5/32"			2040UHP					
HBA121	-	1/4" F-BSPP A 3/16"	24-60	3.0	1/4"-19 GAS	DN5	3/16"	2021UHP							
HBC121	HBC821	1/4" F-BSPP C 3/16"	24-60	2.5	1/4"-19 GAS	DN5	3/16"			2041UHP					
-	HBF821	1/4" F-BSPP F/E 3/16"	24-60	2.0	1/4"-19 GAS	DN5	3/16"						2061UHP	2161UHP	
HBB122	HBB822	1/4" F-BSPP B/A 1/4"	24-60	4.0	1/4"-19 GAS	DN6	1/4"	2022UHP	2032UHP						
HBC122	HBC822	1/4" F-BSPP C 1/4"	24-60	3.5	1/4"-19 GAS	DN6	1/4"			2042UHP					
HBA143	-	3/8" F-BSPP A 1/2"	24-60	5.5	3/8"-19 GAS	DN8	5/16"	2023UHP							
HBC143	HBC843	3/8" F-BSPP C/B 5/16"	24-60	4.5	3/8"-19 GAS	DN8	5/16"		2033UHP	2043UHP					
HBB154	HBB854	1/2" F-BSPP B/A 3/8"	24-60	6.5	1/2"-14 GAS	DN10	3/8"	2024UHP	2034UHP						
HBE154	HBE854	1/2" F-BSPP E/C 3/8"	24-60	5.5	1/2"-14 GAS	DN10	3/8"			2044UHP				2064UHP	
HBA155	HBA855	1/2" F-BSPP A 1/2"	24-60	8.5	1/2"-14 GAS	DN12	1/2"	2025UHP							
HBD155	HBD855	1/2" F-BSPP D/C/B 1/2"	24-60	7.5	1/2"-14 GAS	DN12	1/2"		2035UHP	2045UHP	2145UHP				
HBG187	-	1" F-BSPP G/C/A 3/4"	60	13.0	1"-11 GAS	DN20	3/4"		2037UHP	2047UHP		2057UHP			

## // HP - BSPP Male - UHP



carbon steel part no.	stainless steel part no.	description	cone °	insert tail ID mm	thread F	hose size		hose compatibility							
						DN	inch	2SW	2+2SW	4SW	4SWH	4+2SW	6SW	6SWH	
HPB120	-	1/4" M-BSPP B/A 5/32"	2.5	1/4"-19 GAS	DN4	5/32"	1/8"	2020UHP	2030UHP						
HPC100	-	1/8" M-BSPP C 5/32"	1.8	1/8"-28 GAS	DN4	5/32"	5/32"			2040UHP					
HPA121	HPC821	1/4" M-BSPP A 3/16"	3.0	1/4"-19 GAS	DN5	3/16"	5/32"	2021UHP							
HPC121	-	1/4" M-BSPP C 3/16"	2.5	1/4"-19 GAS	DN5	3/16"	3/16"			2041UHP					
HPB102	-	1/8" M-BSPP B/A 1/4"	4.0	1/8"-28 GAS	DN6	1/4"	3/16"	2022UHP	2032UHP						
HPB122	-	1/4" M-BSPP B/A 1/4"	4.0	1/4"-19 GAS	DN6	1/4"	3/16"	2022UHP	2032UHP						
HPB142	-	3/8" M-BSPP B/A 1/4"	4.0	3/8"-19 GAS	DN6	1/4"	1/4"	2022UHP	2032UHP						
HPC122	-	1/4" M-BSPP C 1/4"	3.5	1/4"-19 GAS	DN6	1/4"	1/4"			2042UHP					
HPA123	-	1/4" M-BSPP A 5/16"	5.5	1/4"-19 GAS	DN8	5/16"	5/16"	2023UHP							
HPA143	-	3/8" M-BSPP A 5/16"	5.5	3/8"-19 GAS	DN8	5/16"	5/16"	2023UHP							
HPC123	-	1/4" M-BSPP C/B 5/16"	4.5	1/4"-19 GAS	DN8	5/16"	3/8"		2033UHP	2043UHP					
HPC143	-	3/8" M-BSPP C/B 5/16"	4.5	3/8"-19 GAS	DN8	5/16"	3/8"		2033UHP	2043UHP					
HPB144	-	3/8" M-BSPP B/A 3/8"	6.5	3/8"-19 GAS	DN10	3/8"	1/2"	2024UHP	2034UHP						
HPC144	-	3/8" M-BSPP C 3/8"	5.5	3/8"-19 GAS	DN10	3/8"	1/2"			2044UHP					

## // HC - METRIC 24°-60° Female - UHP



carbon steel part no.	stainless steel part no.	description	insert tail ID mm	thread F	hose size		hose compatibility								
					DN	inch	2SW	2+2SW	4SW	4SWH	6SW	6SWH			
HCA131	-	14X1.5 F-MET24-60 A 3/16"	3.0	M14X1.5	DN5	3/16"	2021UHP								
HCC131	-	14X1.5 F-MET24-60 C 3/16"	2.5	M14X1.5	DN5	3/16"				2041UHP					
-	HCF831	14X1.5 F-MET24-60 F/E 3/16"	2.0	M14X1.5	DN5	3/16"						2061UHP	2161UHP		
HCB132	-	14X1.5 F-MET24-60 B/A 1/4"	4.0	M14X1.5	DN6	1/4"	2022UHP	2032UHP							
HCB142	HCB842	16X1.5 F-MET24-60 B/A 1/4"	4.0	M16X1.5	DN6	1/4"	2022UHP	2032UHP							

## // HD - DKOS Female - UHP



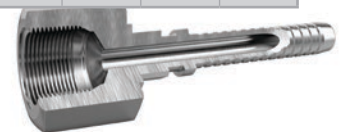
carbon steel part no.	stainless steel part no.	description	insert tail ID mm	thread F	hose size		hose compatibility							
					DN	inch	2SW	2+2SW	4SW	4SWH	4+2SW	6SW	6SWH	6SWHX
HDB180	-	24X1.5 F-DKOS B/A 5/32"	2.5	M24x1.5	DN4	5/32"	2020UHP	2030UHP						
HDA181	-	24X1.5 F-DKOS A 3/16"	3.0	M24x1.5	DN5	3/16"	2021UHP							
HDC161	-	20X1.5 F-DKOS C 3/16"	2.5	M20X1.5	DN5	3/16"			2041UHP					
HDB152	-	18X1.5 F-DKOS B/A 1/4"	4.0	M18X1.5	DN6	1/4"	2022UHP	2032UHP						
HDB172	-	22X1.5 F-DKOS B/A 1/4"	4.0	M22X1.5	DN6	1/4"	2022UHP	2032UHP						
HDB182	-	24X1.5 F-DKOS B/A 1/4"	4.0	M24x1.5	DN6	1/4"	2022UHP	2032UHP						
HDC152	-	18X1.5 F-DKOS C 1/4"	3.5	M18X1.5	DN6	1/4"			2042UHP					
HDA163	-	20X1.5 F-DKOS A 5/16"	5.5	M20X1.5	DN8	5/16"	2023UHP							
HDA183	-	24X1.5 F-DKOS A 5/16"	5.5	M24x1.5	DN8	5/16"	2023UHP							
HDB163	-	20X1.5 F-DKOS B 5/16"	4.5	M20X1.5	DN8	5/16"		2033UHP						
HDC173	-	22X1.5 F-DKOS C/B 5/16"	4.5	M22X1.5	DN8	5/16"		2033UHP	2043UHP					
HDC183	HDC883	24X1.5 F-DKOS C/B 5/16"	4.5	M24x1.5	DN8	5/16"		2033UHP	2043UHP					
HDF183	HDF883	24X1.5 F-DKOS F/E 5/16"	4.5	M24x1.5	DN8	5/16"					2063UHP	2163UHP		
-	HDI883	24X1.5 F-DKOS I/H 5/16"	4.5	M24x1.5	DN8	5/16"							2263UHP	
HDB174	-	22X1.5 F-DKOS B/A 3/8"	6.5	M22X1.5	DN10	3/8"	2024UHP	2034UHP						
HDB184	-	24X1.5 F-DKOS B/A 3/8"	6.5	M24x1.5	DN10	3/8"	2024UHP	2034UHP						
-	HDE874	22X1.5 F-DKOS E/C 3/8"	5.5	M22X1.5	DN10	3/8"			2044UHP		2064UHP			
HDE184	HDE884	24X1.5 F-DKOS E/C 3/8"	5.5	M24x1.5	DN10	3/8"			2044UHP		2064UHP			
HDA175	-	22X1.5 F-DKOS A 1/2"	8.5	M22X1.5	DN12	1/2"	2025UHP							
HDA185	HDA885	24X1.5 F-DKOS A 1/2"	8.5	M24x1.5	DN12	1/2"	2025UHP							
HDG175	-	22X1.5 F-DKOS G/D/C/B 1/2"	7.5	M22X1.5	DN12	1/2"		2035UHP	2045UHP	2145UHP				
HDG185	HDG885	24X1.5 F-DKOS G/D/C/B 1/2"	7.5	M24x1.5	DN12	1/2"		2035UHP	2045UHP	2145UHP				
HDF185	HDF885	24X1.5 F-DKOS F/E 1/2"	7.5	M24x1.5	DN12	1/2"					2065UHP	2165UHP		
HDE1G7	-	36X2 F-DKOS E/G/C/B/A 3/4"	13.0	M36X2	DN20	3/4"	2027UHP	2037UHP	2047UHP		2057UHP	2067UHP		
-	HDE8H8	42X2 F-DKOS E/C 1"	17.5	M42X2	DN25	1"			2048UHP			2068UHP		

## // HE - JIC Female - UHP



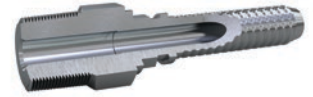
carbon steel part no.	stainless steel part no.	description	insert tail ID mm	thread F	hose size		hose compatibility							
					DN	inch	2SW	2+2SW	4SW	4SWH	4+2SW	6SW	6SWH	6SWHX
-	HEB8B2	9/16 F JIC B/A 1/4"	4	9/16-18 UNF	DN6	1/4"	2022UHP	2032UHP						
-	HEC8B2	9/16 F JIC C 1/4"	3.5	9/16-18 UNF	DN6	1/4"			2042UHP					
HEA1B3	HEA8B3	9/16 F JIC A 5/16"	5.5	9/16-18 UNF	DN8	5/16"	2023UHP							
-	HEC873	3/4 F JIC C/B 5/16"	4.5	3/4-16 UNF	DN8	5/16"		2033UHP	2043UHP					
HEB174	HEB874	3/4 F JIC B/A 3/8"	6.5	3/4-16 UNF	DN10	3/8"	2024UHP	2034UHP						
HEC174	HEC874	3/4 F JIC C 3/8"	5.5	3/4-16 UNF	DN10	3/8"			2044UHP					
-	HEG8F7	1 - 5/16 F JIC G/C/A 3/4"	13	1-5/16 -12 UN	DN20	3/4"		2037UHP	2047UHP		2057UHP			
-	HEC8F8	1 - 5/16 F JIC C 1"	17.5	2-5/16 -12 UN	DN25	1"			2048UHP					

## // HH - NPT Female - UHP



carbon steel part no.	stainless steel part no.	description	insert tail ID mm	thread F	hose size		hose compatibility							
					DN	inch	2SW	2+2SW	4SW	4SWH	4+2SW	6SW	6SWH	6SWHX
HHB122	-	1/4" F-NPT B/A 1/4"	4.0	1/4"-18 NPTF	DN6	1/4"	2022UHP	2032UHP						

## // HI - NPT Male - UHP



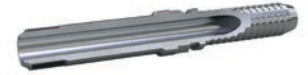
carbon steel part no.	stainless steel part no.	description	insert tail ID mm	thread F	hose size		hose compatibility							
					DN	inch	2SW	2+2SW	4SW	4SWH	4+2SW	6SW	6SWH	6SWHX
HIB100	-	1/8" M NPT B/A 5/32"	2.5	1/8"-27 NPTF	DN4	5/32"	2020UHP	2030UHP						
HIB120	-	1/4" M NPT B/A 5/32"	2.5	1/4"-18 NPTF	DN4	5/32"	2020UHP	2030UHP						
HIB1Q0	-	1/16" M NPT B/A 5/32"	2.5	1/16"-27 NPTF	DN4	5/32"	2020UHP	2030UHP						
HIC100	-	1/8" M NPT C 5/32"	1.8	1/8"-27 NPTF	DN4	5/32"			2040UHP					
HIA101	-	1/8" M NPT A 3/16"	3	1/8"-27 NPTF	DN5	3/16"	2021UHP							
HIA121	-	1/4" M NPT A 3/16"	3	1/4"-18 NPTF	DN5	3/16"	2021UHP							
HIC121	-	1/4" M NPT C 3/16"	2.5	1/4"-18 NPTF	DN5	3/16"			2041UHP					
HIB102	-	1/8" M NPT B/A 1/4"	4	1/8"-27 NPTF	DN6	1/4"	2022UHP	2032UHP						
HIB122	HIB822	1/4" M NPT B/A 1/4"	4	1/4"-18 NPTF	DN6	1/4"	2022UHP	2032UHP						
HIB142	-	1/8" M NPT B/A 1/4"	4	1/8"-27 NPTF	DN6	1/4"	2022UHP	2032UHP						
HIC122	-	3/8" M NPT B/A 1/4"	3.5	3/8"-18 NPTF	DN6	1/4"			2042UHP					
HIA123	-	1/4" M NPT C 1/4"	5.5	1/4"-18 NPTF	DN8	5/16"	2023UHP							
HIA143	-	1/4" M NPT A 5/16"	5.5	1/4"-18 NPTF	DN8	5/16"	2023UHP							
HIC123	-	3/8" M NPT A 5/16"	4.5	3/8"-18 NPTF	DN8	5/16"		2033UHP	2043UHP					
HIC143	-	1/4" M NPT C/B 5/16"	4.5	1/4"-18 NPTF	DN8	5/16"		2033UHP	2043UHP					
HIB144	HIB844	3/8" M NPT B/A 3/8"	6.5	3/8"-18 NPTF	DN10	3/8"	2024UHP	2034UHP						
-	HIB854	1/2" M NPT B/A 3/8"	6.5	3/8"-18 NPTF	DN10	3/8"	2024UHP	2034UHP						
HIA155	HIA855	1/2" M NPT A 1/2"	8.5	1/2"-14 NPTF	DN12	1/2"	2025UHP							
HIB155	HIB855	1/2" M NPT B 1/2"	7.5	1/2"-14 NPTF	DN12	1/2"		2035UHP						
HIG177	-	3/4" M NPT G 3/4"	13	3/4"-14 NPTF	DN20	3/4"		2037UHP	2047UHP		2057UHP			
HIG187	HIG887	1" M NPT G/C/A 3/4"	13	1"-11.5 NPTF	DN20	3/4"		2037UHP	2047UHP		2057UHP			
-	HIC888	1" M NPT C 1"	17.5	1"-11.5 NPTF	DN25	1"			2048UHP					
HWA1QG	-	1/16" MNPT A 1/8" NO HEX	2	1/16"-27 NPTF	DN3	1/8"	202BUHP							
HWB122	-	1/4" MNPT A 1/8" NO HEX	4	1/4"-18 NPTF	DN6	1/4"	2022UHP	2032UHP						

## // HF - TYPE-M Female - UHP



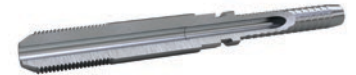
carbon steel part no.	stainless steel part no.	description	insert tail ID mm	thread F	hose size		hose compatibility							
					DN	inch	2SW	2+2SW	4SW	4SWH	4+2SW	6SW	6SWH	6SWHX
HFB1B0		9/16" F-TYPE M B/A 5/32"	2.5	9/16"-18 UNF	DN4	5/32"	2020UHP	2030UHP						
	HFE8B0	9/16" F-TYPE M E/C 5/32"	1.8	9/16"-18 UNF	DN4	5/32"			2040UHP		2060UHP			
HFA1B1		9/16" F-TYPE M A 3/16"	3	9/16"-18 UNF	DN5	3/16"	2021UHP							
HFC1B1	HFC8B1	9/16" F-TYPE M C 3/16"	2.5	9/16"-18 UNF	DN5	3/16"			2041UHP					
	FFF8B1	9/16" F-TYPE M F/E 3/16"	2.4	9/16"-18 UNF	DN5	3/16"					2061UHP	2161UHP		
HFB1B2	HFB8B2	9/16" F-TYPE M B/A 1/4"	4	9/16"-18 UNF	DN6	1/4"	2022UHP	2032UHP						
HFC1B2	HFC8B2	9/16" F-TYPE M C 1/4"	3.5	9/16"-18 UNF	DN6	1/4"			2042UHP					
	HFF8B2	9/16" F-TYPE M F 1/4"	3	3/4"-16 UNF	DN6	1/4"						2162UHP		
	HFA873	3/4" F-TYPE M A 5/16"	5.5	3/4"-16 UNF	DN8	5/16"	2023UHP							
HFC173	HFC873	3/4" F-TYPE M C/B 5/16"	4.5	3/4"-16 UNF	DN8	5/16"		2033UHP	2043UHP					
HFF173	HFF873	3/4" F-TYPE M F/E 5/16"	4.5	3/4"-16 UNF	DN8	5/16"					2063UHP	2163UHP		
	HFF8C3	7/8" F-TYPE M F/E 5/16"	4.5	7/8"-14 UNF	DN8	5/16"					2063UHP	2163UHP		
	HFI873	3/4" F-TYPE M I/H 5/16"	4.5	3/4"-16 UNF	DN8	5/16"							2263UHP	
	HFI8C3	7/8" F-TYPE M I/H 5/16"	4.5	7/8"-14 UNF	DN8	5/16"							2263UHP	
	HFB874	3/4" F-TYPE M B/A 3/8"	6.5	3/4"-16 UNF	DN10	3/8"	2024UHP	2034UHP						
	HFC874	3/4" F-TYPE M C 3/8"	5.5	3/4"-16 UNF	DN10	3/8"			2044UHP					
HFA185	HFA885	1" F-TYPE M A 1/2"	8.5	1"-12 UNF	DN12	1/2"	2025UHP							
HFD185	HFD885	1" F-TYPE M D/C/B 1/2"	7.5	1"-12 UNF	DN12	1/2"		2035UHP	2045UHP	2145UHP				
HFF185	HFF885	1" F-TYPE M F/E 1/2"	7.5	1"-12 UNF	DN12	1/2"						2065UHP	2165UHP	
	HFE8F7	1.5/16" F-TYPE M E/G/C/B/A 3/4"	13	1.5/16"-12 UNF	DN20	3/4"		2037UHP	2047UHP		2057UHP	2067UHP		
	HFC8F8	1.5/16" F-TYPE M C 1"	17.5	1.5/16"-12 UNF	DN25	1"			2048UHP					

## HL - MP Male - UHP



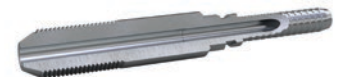
carbon steel part no.	stainless steel part no.	description	insert tail ID mm	thread F	hose size		hose compatibility								
					DN	inch	2SW	2+2SW	4SW	4SWH	4+2SW	6SW	6SWH	6SWHX	
-	HLF873	3/4" MED PRES MALE F/E 5/16"	4.5	3/4" - 16 UNF LH	DN8	5/16"							2063UHP	2163UHP	
-	HLI873	3/4" MED PRES MALE I/H 5/16"	4.5	3/4" - 16 UNF LH	DN8	5/16"									2263UHP
-	HLA8B5	9/16" MED PRES MALE A 1/2"	8.5	9/16" - 18 UNF LH	DN12	1/2"	2025UHP								
-	HLB8B5	9/16" MED PRES MALE B 1/2"	7.5	9/16" - 18 UNF LH	DN12	1/2"		2035UHP	2045UHP	2145UHP					
-	HLD875	3/4" MED PRES MALE D/C 1/2"	7.5	3/4" - 16 UNF LH	DN12	1/2"		2035UHP	2045UHP	2145UHP					
-	HLF875	3/4" MED PRES MALE F/E 1/2"	7.5	3/4" - 16 UNF LH	DN12	1/2"							2065UHP	2165UHP	
-	HLE887	1" MED PRES MALE G/E/C 3/4"	13	1" - 14 UNS LH	DN20	3/4"		2037UHP	2047UHP		2057UHP		2067UHP		
-	HLE888	1" MED PRES MALE E/C 1"	17.5	1" - 14 UNS LH	DN25	1"			2048UHP				2068UHP		

## HM - HP Male - UHP



carbon steel part no.	stainless steel part no.	description	insert tail ID mm	thread F	hose size		hose compatibility								
					DN	inch	2SW	2+2SW	4SW	4SWH	4+2SW	6SW	6SWH	6SWHX	
-	HMB850	1/4" HIGH PRESS MALE B/A 5/32"	2.5	1/4"-28 UNF LH	DN4	5/32"	2020UHP	2030UHP							
-	HME850	1/4" HIGH PRESS MALE E/C 5/32"	1.8	1/4"-28 UNF LH	DN4	5/32"			2040UHP		2060UHP				
-	HME840	3/8" HIGH PRESS MALE E/C 5/32"	1.8	3/8"-24 UNF LH	DN4	5/32"			2040UHP		2060UHP				
-	HME8B0	9/16" HIGH PRESS MALE E/C 5/32"	1.8	9/16"-18 UNF LH	DN4	5/32"			2040UHP		2060UHP				
HMC121	HMC821	1/4" HIGH PRESS MALE C 3/16"	2.5	1/4"-28 UNF LH	DN5	3/16"			2041UHP						
-	HMC841	3/8" HIGH PRESS MALE C 3/16"	2.5	3/8"-24 UNF LH	DN5	3/16"			2041UHP						
-	HMC8B1	9/16" HIGH PRESS MALE C 3/16"	2.5	9/16"-18 UNF LH	DN5	3/16"			2041UHP						
-	HMF821	1/4" HIGH PRESS MALE F/E 3/16"	2.4	1/4"-28 UNF LH	DN5	3/16"					2061UHP	2161UHP			
-	HMF841	3/8" HIGH PRESS MALE F/E 3/16"	2.4	3/8"-24 UNF LH	DN5	3/16"					2061UHP	2161UHP			
-	HMF8B1	9/16" HIGH PRESS MALE F/E 3/16"	2.4	9/16"-18 UNF LH	DN5	3/16"					2061UHP	2161UHP			
-	HMB8B2	9/16" HIGH PRESS MALE B/A 1/4"	4	9/16"-18 UNF LH	DN6	1/4"	2022UHP	2032UHP							
-	HMC842	3/8" HIGH PRESS MALE C 1/4"	3.5	3/8"-24 UNF LH	DN6	1/4"			2042UHP						
-	HMF842	3/8" HIGH PRESS MALE F 1/4"	3	3/8"-24 UNF LH	DN6	1/4"							2162UHP		2263UHP
-	HMF8B2	9/16" HIGH PRESS MALE F 1/4"	3	9/16"-18 UNF LH	DN6	1/4"							2162UHP		2263UHP
-	HMC8B3	9/16" HIGH PRESS MALE B/A 5/16"	4.5	9/16"-18 UNF LH	DN8	5/16"		2033UHP	2043UHP						
-	HMF843	3/8" HIGH PRESS MALE F/E 5/16"	4.5	3/8"-24 UNF LH	DN8	5/16"					2063UHP	2163UHP			
-	HMF8B3	9/16" HIGH PRESS MALE F/E 5/16"	4.5	9/16"-18 UNF LH	DN8	5/16"					2063UHP	2163UHP			
-	HMI8B3	9/16" HIGH PRESS MALE I 5/16"	4.5	9/16"-18 UNF LH	DN8	5/16"								2263UHP	
-	HMI843	3/8" HIGH PRESS MALE I/H 5/16"	4.5	3/8"-24 UNF LH	DN8	5/16"								2263UHP	
-	HME8B4	9/16" HIGH PRESS MALE E/C 3/8"	5.5	9/16"-18 UNF LH	DN10	3/8"			2044UHP		2064UHP				
-	HMD8B5	9/16" HIGH PRESS MALE D/C/B 1/2"	7.5	9/16"-18 UNF LH	DN12	1/2"		2035UHP	2045UHP	2145UHP					
-	HMF8B5	9/16" HIGH PRESS MALE F/E 1/2"	7.5	9/16"-18 UNF LH	DN12	1/2"					2065UHP	2165UHP			

## HN - HP METRIC Male - UHP



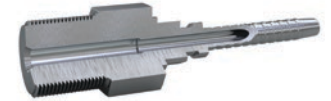
carbon steel part no.	stainless steel part no.	description	insert tail ID mm	thread F	hose size		hose compatibility								
					DN	inch	2SW	2+2SW	4SW	4SWH	4+2SW	6SW	6SWH	6SWHX	
-	HNF831	MET 14 X 1.5 HIGH PRES MALE F/E 3/16"	2.5	M14 X 1.5 LH	DN5	3/16"							2061UHP	2161UHP	
-	HNF832	MET 14 X 1.5 HIGH PRES MALE F 1/4"	1.8	M14 X 1.5 LH	DN6	1/4"								2162UHP	
-	HNF833	MET 14 X 1.5 HIGH PRES MALE F/E 5/16"	1.8	M14 X 1.5 LH	DN8	5/16"							2063UHP	2163UHP	
-	HNI833	MET 14 X 1.5 HIGH PRES MALE I/H 5/16"		M14 X 1.5 LH	DN8	5/16"									2263UHP

## // HG - HP Female - UHP



carbon steel part no.	stainless steel part no.	description	insert tail ID mm	thread F	hose size		hose compatibility								
					DN	inch	2SW	2+2SW	4SW	4SWH	4+2SW	6SW	6SWH	6SWHX	
-	HGF8B1	9/16" F-HP F/E 3/16"	2.0	9/16"-18 UNF	DN5	3/16"							2061UHP	2161UHP	

## // HJ - GAS Male - UHP



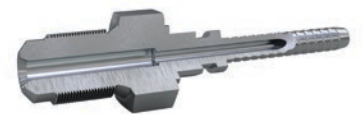
carbon steel part no.	stainless steel part no.	description	insert tail ID mm	thread F	hose size		hose compatibility								
					DN	inch	2SW	2+2SW	4SW	4SWH	4+2SW	6SW	6SWH	6SWHX	
HJB100	-	1/8" M-GAS B/A 5/32"	2.5	1/8"-28 GAS	DN4	5/32"	2020UHP	2030UHP							
HJB120	-	1/4" M-GAS B/A 5/32"	2.5	1/4"-19 GAS	DN4	5/32"	2020UHP	2030UHP							
HJA101	-	1/8" M-GAS A 3/16"	3.0	1/8"-28 GAS	DN5	3/16"	2021UHP								
HJA121	-	1/4" M-GAS A 3/16"	3.0	1/4"-19 GAS	DN5	3/16"	2021UHP								
HJC123	-	1/4" M-GAS C/B 5/16"	4.5	1/4"-19 GAS	DN8	5/16"		2033UHP	2043UHP						

## // HK - METRIC Male - UHP



carbon steel part no.	stainless steel part no.	description	insert tail ID mm	thread F	hose size		hose compatibility								
					DN	inch	2SW	2+2SW	4SW	4SWH	4+2SW	6SW	6SWH	6SWHX	
HKA1KG	-	MET 6 X 1 MALE A 1/8"	2	MET 6 X 1	DN3	1/8"	2020UHP								
HKB110	-	MET 10 X 1 MALE B/A 5/32"	2.5	MET 10 X 1	DN4	5/32"	2020UHP	2030UHP							
HKB110	-	MET 7 X 1 MALE B/A 5/32"	2.5	MET 7 X 1	DN4	5/32"	2020UHP	2030UHP							
HKB1J0	-	MET 8 X 1.25 MALE B/A 5/32"	2.5	MET 8 X 1.25	DN4	5/32"	2020UHP	2030UHP							
HKA111	-	MET 10 X 1 MALE A 3/16"	3	MET 10 X 1	DN5	3/16"	2021UHP								
HKA111	-	MET 7 X 1 MALE A 3/16"	3	MET 7 X 1	DN5	3/16"	2021UHP								

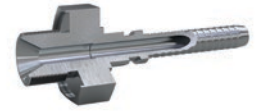
## // HQ - GAS100° External cone Male - UHP



carbon steel part no.	stainless steel part no.	description	insert tail ID mm	thread F	hose size		hose compatibility								
					DN	inch	2SW	2+2SW	4SW	4SWH	4+2SW	6SW	6SWH	6SWHX	
HQB120	-	1/4" GAS 100 MALE EXT CONE B/A 5/32"	2.5	1/4"-19 GAS	DN4	1/8"	2020UHP	2030UHP							
HQC121	-	1/4" GAS 100 MALE EXT CONE C 3/16"	2.5	1/4"-19 GAS	DN5	5/32"			2041UHP						
HQF121	-	1/4" GAS 100 MALE EXT CONE F/E 3/16"	2.4	1/4"-19 GAS	DN5	5/32"				2061UHP	2161UHP				
HQB122	-	1/4" GAS 100 MALE EXT CONE B/A 1/4"	4	1/4"-19 GAS	DN6	5/32"	2022UHP	2032UHP							
HQA123	-	1/4" GAS 100 MALE EXT CONE A 5/16"	5.5	1/4"-19 GAS	DN8	3/16"	2023UHP								
-	HQC823	1/4" GAS 100 MALE EXT CONE C/B 5/16"	4.5	1/4"-19 GAS	DN8	3/16"		2033UHP	2043UHP						

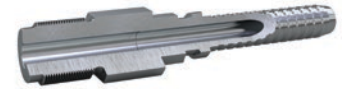


## // HR - USIT Male - UHP



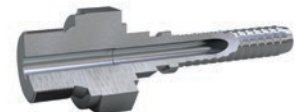
carbon steel part no.	stainless steel part no.	description	insert tail ID mm	thread F	hose size		hose compatibility							
					DN	inch	2SW	2+2SW	4SW	4SWH	4+2SW	6SW	6SWH	6SWHX
HRB120	-	1/4" M-USIT B/A 5/32"	2.5	1/4"-19 GAS	DN4	5/32"	2020UHP	2030UHP						
HRC121	-	1/4" M-USIT C 3/16"	2.5	1/4"-19 GAS	DN5	3/16"			2041UHP					
HRB122	-	1/4" M-USIT B/A 1/4"	4.0	1/4"-19 GAS	DN6	1/4"	2022UHP	2032UHP						
HRB142	-	3/8" M-USIT B/A 1/4"	4.0	3/8"-19 GAS	DN6	1/4"	2022UHP	2032UHP						

## // HS - FLAT SEAL Male - UHP



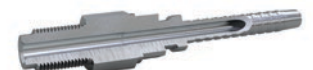
carbon steel part no.	stainless steel part no.	description	insert tail ID mm	thread F	hose size		hose compatibility							
					DN	inch	2SW	2+2SW	4SW	4SWH	4+2SW	6SW	6SWH	6SWHX
HSB100	-	1/8" M-FS B/A 5/32"	2.5	1/8"-28 GAS	DN4	5/32"	2020UHP	2030UHP						
HSA101	-	1/8" M-FS A 3/16"	3.0	1/8"-28 GAS	DN5	3/16"	2021UHP		2041UHP					
HSB122	-	1/4" M-FS B/A 1/4"	4.0	1/4"-19 GAS	DN6	1/4"	2022UHP	2032UHP						
HSA123	-	1/4" M-FS A 5/16"	5.5	1/4"-19 GAS	DN8	5/16"	2023UHP							
-	HSB823	1/4" M-FS B 5/16"	4.5	1/4"-19 GAS	DN8	5/16"		2033UHP						

## // HT - DIN3852 Male - UHP



carbon steel part no.	stainless steel part no.	description	insert tail ID mm	thread F	hose size		hose compatibility							
					DN	inch	2SW	2+2SW	4SW	4SWH	4+2SW	6SW	6SWH	6SWHX
HTB122	-	1/4" M-DIN3852 B/A 1/4"	4.0	1/4"-19 GAS	DN6	1/4"	2022UHP	2032UHP						
HTA123	-	1/4" M-DIN3852 A 5/16"	5.5	1/4"-19 GAS	DN8	5/16"	2023UHP							
HTA143	-	3/8" M-DIN3852 A 5/16"	5.5	3/8"-19 GAS	DN8	5/16"	2023UHP							
HTC143	-	3/8" M-DIN3852 C/B 5/16"	4.5	3/8"-19 GAS	DN8	5/16"		2033UHP	2043UHP					
HTB144	-	3/8" M-DIN3852 B/A 3/8"	6.5	3/8"-19 GAS	DN10	3/8"	2024UHP	2034UHP						

## // HU - FLAT SEAL METRIC Male - UHP



carbon steel part no.	stainless steel part no.	description	insert tail ID mm	thread F	hose size		hose compatibility							
					DN	inch	2SW	2+2SW	4SW	4SWH	4+2SW	6SW	6SWH	6SWHX
HUB110	-	7x1 M-FS MET B/A 5/32"	2.5	M7x1	DN4	5/32"	2020	2030						

## // PVC CLEAR REINFORCED HOSE PROTECTION JACKET



part no.	description
PVC50CL	1/2" CLEAR PVC W/ BRAID
PVC63CL	5/8" CLEAR PVC W/ BRAID
PVC75CL	3/4" CLEAR PVC W/ HELIX
PVC100CL	1" CLEAR PVC W/ HELIX
PVC125CL	1 1/4" CLEAR PVC W/ HELIX
PVC150CL	1 1/2" CLEAR PVC W/ HELIX
PVC200CL	2" CLEAR PVC W/ HELIX



**WARNING:** Hose protection jacket is not an hose burst shield, and cannot be intended as protection for the operator from bursts, leaks or high pressure fluid injections. Hose protection jacket are intended only as hose cover protection from external surface abrasion and damages.

## // SRM - BEND RESTRICTOR



part no.	description	length	hose
SRM912	BEND RESTRICTOR ID20	250 mm	2061UHP / 2161UHP
SRM931	BEND RESTRICTOR ID25	250 mm	2163UHP
SRM932	BEND RESTRICTOR ID23	250 mm	2063UHP
SRM971	BEND RESTRICTOR ID41	250 mm	2067UHP

## // SXF - STAINLESS STEEL RING



part no.	description
SXF101	STAINLESS RING 29 X 25
SXF102	STAINLESS RING 32 X 25
SXF103	STAINLESS RING 35.1 X 25
SXF104	STAINLESS RING 39.4 X 25
SXF105	STAINLESS RING 45.3 X 27
SXF106	STAINLESS RING 51 X 30
SXF007	STAINLESS RING 57.3 X 30
SXF008	STAINLESS RING 65 X 30
SXF009	STAINLESS RING 22.6 X 20

## // SXE - HOSE ARRESTOR



part no.	description	size	strength
SXE001	HOSE ARRESTOR D.6-10	L=600/740 mm	13.72 kN
SXE002	HOSE ARRESTOR D.10-15	L=600/740 mm	13.72 kN
SXE003	HOSE ARRESTOR D.15-20	L=600/780 mm	14.70 kN
SXE004	HOSE ARRESTOR D.20-25	L=600/800 mm	14.70 kN
SXE005	HOSE ARRESTOR D.25-30	L=600/800 mm	21.57 kN
SXE006	HOSE ARRESTOR D.30-40	L=600/820 mm	21.57 kN
SXE007	HOSE ARRESTOR D.40-50	L=600/850 mm	24.77 kN

## // SXE - HOSE ARRESTOR LL (long length)



part no.	description	size	strength
SXE102	HOSE ARRESTOR D.10-15	L=600/990 mm	13.72 kN
SXE103	HOSE ARRESTOR D.15-20	L=600/990 mm	14.70 kN
SXE104	HOSE ARRESTOR D.20-25	L=600/990 mm	14.70 kN
SXE105	HOSE ARRESTOR D.25-30	L=600/990 mm	21.57 kN
SXE106	HOSE ARRESTOR D.30-40	L=600/990 mm	21.57 kN
SXE107	HOSE ARRESTOR D.40-50	L=600/990 mm	24.77 kN

## // SXH - GLAND NUT



part no.	description	compatible with
SXH810	GLAND NUT MP 9/16 (EXT. THREAD 13/16-16)	SXH800
SXH811	GLAND NUT MP 3/4 (EXT. THREAD 3/4-14)	SXH801
SXH812	GLAND NUT MP 1 (EXT. THREAD 1+3/8-12)	SXH802
SXH830	GLAND NUT HP 9/16 (EXT. THREAD 1+1/8-12)	SXH820 - SXH840
SXH831	GLAND NUT HP 3/8 (EXT. THREAD 3/4-16)	SHX821
SXH832	GLAND NUT HP 1/4 (EXT. THREAD 9/16-18)	SXH822
SXH850	GLAND NUT HP M14X1.5 (EXT. THREAD M30X2)	SXH840 - SXH820
SXH851	GLAND NUT METRIC HP 1/4 (EXT. THREAD M16X1,5)	SXH822
SXH852	GLAND NUT METRIC HP 3/8 (EXT. THREAD M20X1,5)	SXH821
SXH853	GLAND NUT METRIC HP 9/16 & HP M14X1,5 SLIM COLLAR (EXT. THREAD M26X2)	SXH803 - SXH841

## // SXH - COLLAR



part no.	description	compatible with
SXH800	COLLAR MP 9/16"-18 UNF LH	SHX810
SXH801	COLLAR MP 3/4"-16 UNF LH	SHX811
SXH802	COLLAR MP 1"-14 UNS LH	SXH812
SXH803	COLLAR SLIM HP 9/16"-18 UNF LH	SXH853
SXH820	COLLAR HP 9/16"-18 UNF LH	SXH830 - SXH850
SXH821	COLLAR HP 3/8"-24 UNF LH	SXH831
SXH822	COLLAR HP 1/4"-28 UNF LH	SXH832
SXH840	COLLAR HP M14X1.5 LH	SXH850 - SXH830
SXH841	COLLAR SLIM HP M14X1.5 LH	SXH853

## // SXI - QUICK RELEASE COUPLINGS (1000 bar)



part no.	description
SXI001	COUPLING HQRC 1000 1/4 F-GAS
SXI002	COUPLING HQRC 1000 1/8 F-NPT
SXI003	COUPLING HQRC 1000 1/4 F-NPT
SXI004	COUPLING HQRC 1000 3/8 F-NPT
SXI005	COUPLING HQRC 1000 3/8 F-NPT
SXI006	COUPLING HQRC 1000 3/8 F-NPT
SXI007	COUPLING HQRC 1000 1/4 M-NPT
SXI008	COUPLING HQRC 1000 3/8 M-NPT

## // SXO - QUICK RELEASE NIPPLE (1000 bar)



part no.	description
SXO001	NIPPLE HQRC 1000 1/4 F-GAS
SXO002	NIPPLE HQRC 1000 1/8 F-NPT
SXO003	NIPPLE HQRC 1000 1/4 F-NPT
SXO004	NIPPLE HQRC 1000 3/8 F-NPT
SXO005	NIPPLE HQRC 1000 1/4 M-GAS
SXO006	NIPPLE HQRC 1000 3/8 M-GAS
SXO007	NIPPLE HQRC 1000 1/4 M-NPT
SXO008	NIPPLE HQRC 1000 3/8 M-NPT

## // SXJ - QUICK RELEASE COUPLINGS (1500 bar)



part no.	description
SXJ001	COUPLING HQRC 1500 1/4 F-GAS
SXJ002	COUPLING HQRC 1500 1/4 F-NPT

## // SXP - QUICK RELEASE NIPPLE (1500 bar)



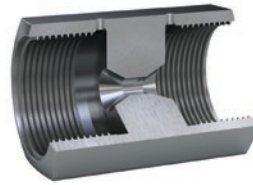
part no.	description
SXP001	NIPPLE HQRC 1500 1/4 F-GAS
SXP002	NIPPLE HQRC 1500 1/4 F-NPT

## // SXG - STAINLESS STEEL CATCH RING



part no.	description
SXG001	CATCH RING 9X33
SXG002	CATCH RING 10X39
SXG003	CATCH RING 13X41
SXG004	CATCH RING 14X42

## // SXK - CONNECTOR



part no.	description
SXK001	CONNECTOR M30X2

## // WARNING LABEL

part no.	description
MR242	WARNING LABEL

**⚠ WARNING**  
HIGH PRESSURE!




This product is designed to operate at Ultra High Pressure. There is an inherent risk of injury / fatality arising from abuse, improper handling or using defective / damaged equipment.  
A complete and thorough inspection of the hose and fittings must be maintained prior to every operation.  
Any defective, worn or damaged components must be replaced with immediate effect.

MR242





CRP Industries Inc.  
35 Commerce Drive  
Cranbury, NJ 08512 USA

**Toll Free** 800.526.4066

**Phone** 609.578.4100

**Telefax** 609.578.4112

[hose@crpindustries.com](mailto:hose@crpindustries.com)

USA | MEXICO

[www.crpinflex.com](http://www.crpinflex.com)



INDUHP16