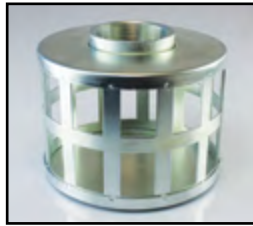


## STRAINERS FOR WATER SUCTION HOSE

Used on the submersed end of suction hose to prevent debris from entering the pump during operation. All threads are NPS (trash strainers are square hole).



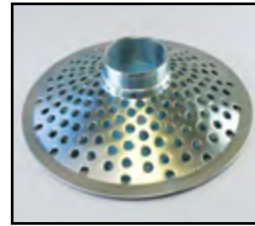
**ROUND HOLE**



**SQUARE HOLE**



**TUBE**



**TOP HOLE**



**BOTTOM HOLE**

Size (inch)	Round Hole Part Number <sup>1</sup>	Square Hole Part Number <sup>1</sup>	Tube Part Number <sup>1</sup>	Top Hole Part Number <sup>1</sup>	Bottom Hole Part Number <sup>1</sup>
1-1/2	RHS150	SHS150	TRHS150	THS150	BHS150
2	RHS200	SHS200	TRHS200	THS200	BHS200
2-1/2	RHS250	-	-	-	-
3	RHS300	SHS300	TRHS300	THS300	BHS300
4	RHS400	SHS400	-	-	-
6	RHS600	SHS600	-	-	-
8	RHS800	-	-	-	-

## HYDRANT ADAPTERS - BRASS



For industrial utility and fire department applications, these adapters allow easy connections from hydrant to smaller size hose. Made of heavy duty cast brass with satin finish, all female ends are supplied with pin lug wrenching. All threads are V cut.

Female Size (inch)	Female Thread	Male Size	Male End Thread	Part Number <sup>1</sup>
1-1/2	NPT	1-1/2	NST	HAB1516
1-1/2	NST	1-1/2	NPT	HAB1615
2	NPT	1-1/2	NST	HAB2016
2-1/2	NST	3/4	GHT	HAB075
2-1/2	NST	3/4	NPSM	HAB076
2-1/2	NST	1	NPSM	HAB100
2-1/2	NST	1-1/2	NPSM	HAB150
2-1/2	NST	1-1/2	NPT	HAB150NPT
2-1/2	NST	1-1/2	NST	HAB150NST
2-1/2	NST	2	NPSM	HAB200
2-1/2	NST	2	NPT	HAB200NPT
2-1/2	NST	2-1/2	NPT	HAB250NPT

Item	Part Number <sup>2</sup>
Replacement Gasket	HAG250

Other thread combinations and particular city/municipal hydrant threads are available in brass with minimal factory order.

**WARNING!** Brass should never be exposed to use of any materials containing ammonia due to susceptibility of brass for stress corrosion cracking. This attack can cause sudden and catastrophic failure of the assembly leading to property damage, injury, or death.

**!** <sup>1</sup>This product can expose you to chemicals including lead, which is known to the State of California to cause cancer, birth defects or other reproductive harm. For more information visit [www.P65WARNINGS.ca.gov](http://www.P65WARNINGS.ca.gov)  
<sup>2</sup>This product can expose you to chemicals including carbon black, which is known to the State of California to cause cancer, birth defects or other reproductive harm. For more information visit [www.P65WARNINGS.ca.gov](http://www.P65WARNINGS.ca.gov)

**All sizes may not be stocked in all locations. Check with customer service for availability.**  
**We disclaim any liability for use of our products in applications other than which they are designed.**