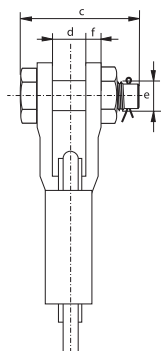
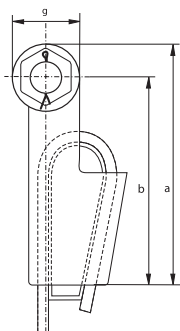




G-6423



Green Pin® sockets

open wedge socket with safety bolt

- **Material** : high tensile steel
- **Standard** : generally to EN 13411-6
- **Finish** : hot dipped galvanized
- **Temperature Range** : -20°C up to +200°C
- **Certification** : 2.1 2.2 3.1

number	minimum breaking load	diameter wire rope	length	length to center pin	width	width inside	dia- meter pin	thick- ness side plates	diameter eye	weight each
	t	mm	a mm	b mm	c mm	d mm	e mm	f mm	g mm	kg
0.25	8	7 - 8	128	110	69	18	16	9	36	0.8
0.5	12	9 - 10	165	142	83	20.5	20	11	46	1.5
1	20	11 - 13	175	146	101	25	25	12	57	2.4
2	25	14 - 16	211	176	124	31	30	15	70	4.8
3	40	18 - 19	252	212	138	38	35	16	80	8.3
4	55	20 - 22	288	240	148	44	41	19	95	11
5	75	24 - 26	329	274	176	51	50	22	110	17.9
6	90	27 - 29	375	310	193	57	57	25	130	21
7	110	30 - 32	423	350	210	63	63	28	146	33
8	125	34 - 36	474	400	216	69	65	28	148	42
9	150	37 - 39	527	450	230	76	70	30	153	52
10	170	40 - 42	580	500	244	76	77	33	160	73

In inch

number	minimum breaking load	diameter wire rope	length	length to center pin	width	width inside	dia- meter pin	thick- ness side plates	diameter eye	weight each
	t	inch	a inch	b inch	c inch	d inch	e inch	f inch	g inch	lbs
0.25	8	$\frac{5}{16}$	$5 \frac{1}{32}$	$4 \frac{5}{16}$	$2 \frac{23}{32}$	$\frac{23}{32}$	$\frac{5}{8}$	$\frac{11}{32}$	$1 \frac{7}{16}$	1.76
0.5	12	$\frac{3}{8}$	$6 \frac{1}{2}$	$5 \frac{19}{32}$	$3 \frac{9}{32}$	$\frac{13}{16}$	$\frac{25}{32}$	$\frac{7}{16}$	$1 \frac{13}{16}$	3.31
1	20	$\frac{1}{2}$	$6 \frac{7}{8}$	$5 \frac{3}{4}$	$3 \frac{31}{32}$	1	1	$\frac{15}{32}$	$2 \frac{1}{4}$	5.29
2	25	$\frac{5}{8}$	$8 \frac{5}{16}$	$6 \frac{29}{32}$	$4 \frac{7}{8}$	$1 \frac{1}{4}$	$1 \frac{3}{16}$	$\frac{19}{32}$	$2 \frac{3}{4}$	10.58
3	40	$\frac{3}{4}$	$9 \frac{15}{16}$	$8 \frac{11}{32}$	$5 \frac{7}{16}$	$1 \frac{17}{32}$	$1 \frac{3}{8}$	$\frac{5}{8}$	$3 \frac{5}{32}$	18.3
4	55	$\frac{7}{8}$	$11 \frac{11}{32}$	$9 \frac{1}{2}$	$5 \frac{13}{16}$	$1 \frac{3}{4}$	$1 \frac{5}{8}$	$\frac{3}{4}$	$3 \frac{3}{4}$	24.3
5	75	1	$12 \frac{15}{16}$	$10 \frac{25}{32}$	$6 \frac{29}{32}$	2	$1 \frac{31}{32}$	$\frac{7}{8}$	$4 \frac{5}{16}$	39.5
6	90	$1 \frac{1}{8}$	$14 \frac{3}{4}$	$12 \frac{3}{16}$	$7 \frac{19}{32}$	$2 \frac{1}{4}$	$2 \frac{1}{4}$	1	$5 \frac{1}{8}$	46.3
7	110	$1 \frac{1}{4}$	$16 \frac{11}{16}$	$13 \frac{25}{32}$	$8 \frac{9}{32}$	$2 \frac{1}{2}$	$2 \frac{1}{2}$	$1 \frac{1}{8}$	$5 \frac{3}{4}$	72.8
8	125	$1 \frac{3}{8}$	$18 \frac{11}{16}$	$15 \frac{3}{4}$	$8 \frac{17}{32}$	$2 \frac{23}{32}$	$2 \frac{9}{16}$	$1 \frac{1}{8}$	$5 \frac{13}{16}$	92.6
9	150	$1 \frac{1}{2}$	$20 \frac{3}{4}$	$17 \frac{3}{4}$	$9 \frac{3}{32}$	3	$2 \frac{3}{4}$	$1 \frac{3}{16}$	6	114.6
10	170	$1 \frac{5}{8}$	$22 \frac{13}{16}$	$19 \frac{23}{32}$	$9 \frac{5}{8}$	3	$3 \frac{1}{32}$	$1 \frac{5}{16}$	$6 \frac{9}{32}$	160.9

CAD

5

6

7

8

9

10

11

12

13

14

15

16

17

18

19

20