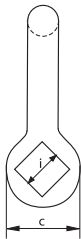
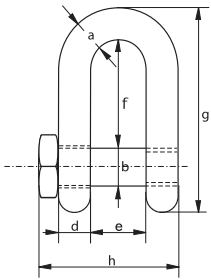


Green Pin® Trawling Shackles

dee shackles with square headed screw pin



G-4154



- **Material** : bow and pin high tensile steel, Grade 6, quenched and tempered
- **Safety Factor** : MBL equals 6 x WLL
- **Standard** : EN 13889 and meets performance requirements of US Fed. Spec. RR-C-271, Grade A
- **Finish** : hot dipped galvanized
- **Certification** : 2.1 2.2 3.1 MTC^a CE

working load limit	diameter bow	diameter pin	diameter eye	width eye	width inside	length inside	length	length bolt	width bolt head	weight each
t	a mm	b mm	c mm	d mm	e mm	f mm	g mm	h mm	i mm	kg
2	13.5	16	34	13	22	43	81	57.5	22	0.32
3.25	16	19	40	16	27	51	97	71	27	0.58
4.75	19	22	46	19	31	59	112	82	32	0.92
6.5	22	25	52	22	36	73	134	93	32	1.33
8.5	25	28	59	25	43	85	154	108	36	2.03
9.5	28	32	66	28	47	90	167	120	41	2.88
12	32	35	72	32	51	94	180	137	50	3.96
13.5	35	38	80	35	57	115	209	149	50	5.24
17	38	42	88	38	60	127	230	164	60	6.8
25	45	50	103	45	74	149	271	192	60	11.22

In inch

working load limit	diameter bow	diameter pin	diameter eye	width eye	width inside	length inside	length	length bolt	width bolt head	weight each
t	a inch	b inch	c inch	d inch	e inch	f inch	g inch	h inch	i inch	lbs
2	1/2	5/8	1 11/32	1/2	7/8	1 11/16	3 3/16	2 1/4	7/8	0.7
3.25	5/8	3/4	1 9/16	5/8	1 1/16	2	3 13/16	2 25/32	1 1/16	1.28
4.75	3/4	7/8	1 13/16	3/4	1 7/32	2 5/16	4 13/32	3 7/32	1 1/4	2.03
6.5	7/8	1	2 1/16	7/8	1 13/32	2 7/8	5 9/32	3 21/32	1 1/4	2.93
8.5	1	1 1/8	2 5/16	31/32	1 11/16	3 11/32	6 1/16	4 1/4	1 13/32	4.48
9.5	1 1/8	1 1/4	2 19/32	1 3/32	1 27/32	3 17/32	6 9/16	4 23/32	1 5/8	6.35
12	1 1/4	1 3/8	2 27/32	1 1/4	2	3 11/16	7 3/32	5 13/32	1 31/32	8.72
13.5	1 3/8	1 1/2	3 5/32	1 3/8	2 1/4	4 17/32	8 7/32	5 7/8	1 31/32	11.56
17	1 1/2	1 5/8	3 15/32	1 1/2	2 3/8	5	9 1/16	6 15/32	2 3/8	15
25	1 3/4	2	4 1/16	1 25/32	2 29/32	5 7/8	10 21/32	7 9/16	2 3/8	24.74