

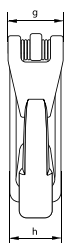
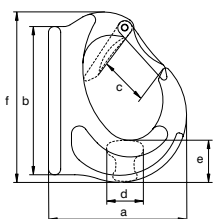


## Green Pin® Excavator Hook GR8

### Grade 8 excavator hook



GH



- **Material:** alloy steel, grade 8, quenched and tempered
- **Safety factor:** MBL equals 4 x WLL
- **Finish:** painted yellow (J) or white
- **Temperature range:** -40°C up to +200°C
- **Certification:** 2.1 2.2 MPI<sup>b</sup>
- **Note:** welding must be done in accordance with DIN 5817 resp. 15429, by a qualified welder according to EN 287-1

working load limit	width	length	width opening	thickness	width	length	width	width	weight each
t	a mm	b mm	c mm	d mm	e mm	f mm	g mm	h mm	kg
1	72	78	25	19	28	108	31	26	0.52
2	91	83	33	20	28	113	31	34	0.7
3	105	105	33	26	32	129	31	34	1.15
4	121	130	35	27	37	148	41	38	1.66
5	138	149	43	28	45	167	41	44	2.36
8	145	148	43	41	52	173	41	51	3.32
10	178	197	60	46	61	227	50	66	6.44
15	185	223	65	60	70	251	55	80	9.7

INFO

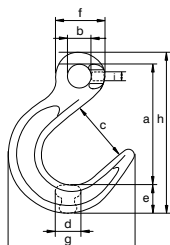


## Green Pin® Foundry Hook E GR8

### Grade 8 eye foundry hook



CFO



- **Material:** alloy steel, grade 8, quenched and tempered
- **Safety factor:** MBL equals 4 x WLL
- **Finish:** painted yellow (J), red (R) or white
- **Temperature range:** -40°C up to +200°C
- **Certification:** 2.1 2.2 3.1 \* MPI<sup>b</sup> \* DGUV \*
- **Note:** from 8.2 t without flat part

for chain diameter		working load limit	length	diameter eye inside	width opening	thickness	width	diameter eye outside	width outside	length	thickness	weight each
mm	inch	t	a mm	b mm	c mm	d mm	e mm	f mm	g mm	h mm	i mm	kg
6	7/32	1.12	93	18	47	17	22	38	97	125	7	0.33
7 - 8	1/4 - 5/16	2	124	24	63	22	30	51	129	166	9	0.78
10	3/8	3.2	157	33	79	28	36	66	160	208	11	1.5
13	1/2	5.4	190	44	93	36	46	85	198	256	14	3
16	5/8	8.2	205	35	95	45	52	88	204	284	24	4.2
18 - 20	3/4	12.8	235	40	111	53	55	92	228	315	25	7.8
22	7/8	15.5	265	46	123	66	71	110	258	268	32	9.9
26	1	21.6	305	54	133	65	81	120	277	420	33	13.8
32	1 1/4	32.8	327	60	155	84	96	131	333	459	35	24.5

\* Excluding sizes 16 mm, 18/20 mm, 22 mm, 26 mm and 32 mm