

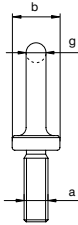
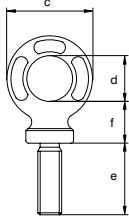
Green Pin® Lifting Eye GR8

Grade 8 lifting eye

- **Material:** alloy steel, grade 8, quenched and tempered
- **Safety factor:** MBL equals 5 x WLL
- **Finish:** painted red or white
- **Temperature range:** -40°C up to +200°C
- **Certification:** 2.1 2.2 3.1 MPI® CE



AL



working load limit	diameter thread	diameter base	diameter eye outside	diameter eye inside	length	thickness base	diameter	weight each
t	a mm	b mm	c mm	d mm	e mm	f mm	g mm	kg
0.2	M6 x 1.00	20	34	20	20	17	7	0.05
0.4	M8 x 1.25	20	34	20	24	17	7	0.07
0.7	M10 x 1.50	20	38	22	30	19	8	0.08
1	M12 x 1.75	25	47	27	36	23	10	0.14
1.2	M14 x 2.00	30	57	30	40	27	14	0.25
1.5	M16 x 2.00	36	63	35	53	31	14	0.39
2	M18 x 2.50	36	63	35	53	31	14	0.38
2.5	M20 x 2.50	40	72	40	58	34	16	0.58
3	M22 x 2.50	42	82	45	64	38	19	1.01
4	M24 x 3.00	55	95	55	84	40	20	1.12
5	M27 x 3.00	55	95	55	84	40	20	1.18
6	M30 x 3.50	60	108	60	99	49	24	1.84
7	M33 x 3.50	60	108	60	99	49	24	2.01
8	M36 x 4.00	65	118	68	117	47	25	2.44
9	M39 x 4.00	65	118	68	117	47	25	2.62
10	M42 x 4.50	70	142	80	135	61	31	5.41
15	M45 x 4.50	70	142	80	135	61	31	4.16
18	M48 x 5.00	95	181	97	150	68	42	8.22
20	M52 x 5.00	95	181	97	150	68	42	8.55
25	M56 x 5.50	95	181	97	150	68	42	8.85
30	M60 x 5.50	95	181	97	150	68	42	9.16
36	M64 x 6.00	95	181	97	150	68	42	9.55