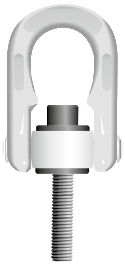


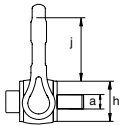
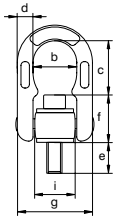
# Green Pin® Long Rotating Hoist Ring GR8

## Grade 8 rotating hoist ring longer length

- **Material:** alloy steel, grade 8, quenched and tempered
- **Safety factor:** MBL equals 5 x WLL
- **Finish:** painted red or white
- **Temperature range:** -40°C up to +200°C
- **Certification:** 2.1 2.2 3.1 MPI® CE
- **Note:** WLL indicated hereunder are given in the worst conditions of use, i.e. 90°



ADAL



working load limit	diameter thread	width inside	length inside	diameter	length	thickness base	width outside	diameter base	diameter base	length inside	hex key	torque value	weight each
t	a mm	b mm	c mm	d mm	e mm	f mm	g mm	h mm	i mm	j mm	mm	Nm	kg
0.4	M8 x 1.25	35	41	13	52	35	68	34	38	43	6	6.5	0.46
0.4	M8 x 1.25	35	41	13	92	35	68	34	38	43	6	6.5	0.47
0.7	M10 x 1.5	35	39	13	62	37	68	34	38	43	8	13	0.47
0.7	M10 x 1.5	35	39	13	125	37	68	34	38	43	8	13	0.5
1	M12 x 1.75	35	36	13	62	39	68	34	38	43	10	22	0.49
1	M12 x 1.75	35	36	13	125	39	68	34	38	43	10	22	0.53
1.6	M16 x 2.0	35	42	13	92	43	68	34	38	52	14	55	0.6
1.6	M16 x 2.0	35	42	13	172	43	68	34	38	52	14	55	0.71
2.5	M20 x 2.5	35	38	13	112	47	68	34	38	52	17	110	0.75
2.5	M20 x 2.5	35	38	13	172	47	68	34	38	52	17	110	0.87
4	M24 x 3.0	53	55	20	112	71	105	49	56	71	19	190	2.16
4	M24 x 3.0	53	55	20	172	71	105	49	56	71	19	190	2.33
5	M27 x 3.0	53	61	20	90	65	105	49	56	71	19	280	2.2
6.3	M30 x 3.5	53	61	20	90	65	105	49	56	71	19	380	2.27
6.3	M30 x 3.5	53	61	20	240	65	105	49	56	71	19	380	3.05
10	M36 x 4.0	71	87	30	110	84	146	68	77	98	19	600	5.72
12.5	M42 x 4.5	71	87	30	120	84	146	68	77	98	19	1000	6.07